

Parts catalogue

FLAIL MOWER

(EXPORT MODEL)

H75B

H90B

MODEL	CODE
H75	84-1713-???-??
H90	84-1723-???-??

CONTENTS

Fig.1	ROTARY COVER & GEAR BOX-----	1
Fig.2	BELT COVER & KNIFE DRUM-----	7

OREC CO.,LTD.

Update : March 2004

Fig.1 ROTARY COVER & GEAR BOX

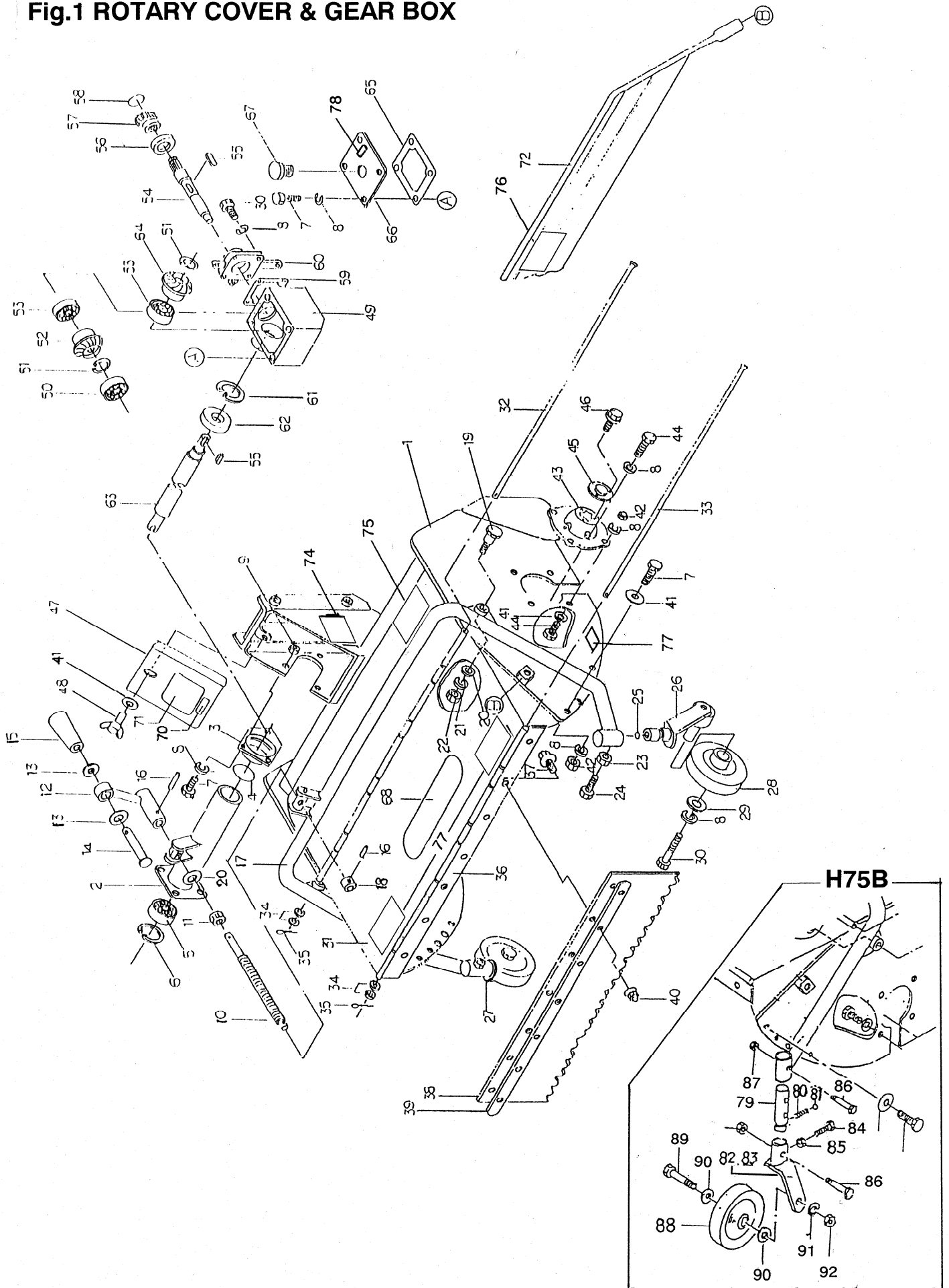


Fig.1 ROTARY COVER & GEAR BOX

Ref.	Parts No.	Parts Name	Quantity		Remarks
			H75B	H90B	
1	84-1723-703-50	Rotary Cover		1	
	84-1713-703-10	Rotary Cover	1		
2	84-1723-691-00	Support Pipe		1	
	84-1713-691-00	Support Pipe	1		
3	84-1713-692-00	Fitting	1	1	
4	89-5221-048000	Ring O Type P48	1	1	
5	89-3115-060044	Ball Bearing 6004 2RS	1	1	
6	89-2512-000420	Snap Ring 42	1	1	
7	89-1111-080162	Bolt M8*16	11	11	
8	89-1750-080002	Spring Washer 8	28	28	
9	89-1511-080042	Nut M8	3	3	
10	84-1723-724-00	Adjusting Screw	1	1	
11	89-1513-160042	Hexagonal Nut M16	1	1	
12	84-1723-739-00	Adjusting Handle		1	
	84-1713-739-00	Adjusting Handle	1		
13	89-1711-100002	Washer 10	2	2	
14	89-2181-100802	Round Headed Pin 10*80	1	1	
15	83-1210-425-00	Grip 10	1	1	
16	89-2111-050022	Spring Roll Pin 5*22	2	2	
17	84-1723-723-00	Front Arm		1	
	84-1713-723-00	Front Arm	1		
18	84-1723-744-00	Adjusting Stopper Boss	1	1	
19	80-1610-714-00	Fitting Bolt	2	2	
20	89-1714-120002	Flat Washer 12	3	3	
21	89-1750-120002	Spring Washer 12	2	2	
22	83-1610-192-00	Nut M12 P1.25	2	2	
23	89-1511-100042	Nut M10		2	
24	89-1111-100352	Bolt M10*35		2	
25	89-3410-110000	Steel Ball 11		2	
26	84-1723-726-20	Fork (R)		1	
27	84-1723-725-20	Fork (L)		1	
28	84-1563-727-00	Tire Assy 250-4		2	
29	83-1210-313-00	Washer 8*32*3.2		2	
30	89-1111-080202	Bolt M8*20		2	
31	84-1723-764-00	Front Cover		1	
	84-1713-764-00	Front Cover	1		
32	84-1723-748-00	Shaft For Hinge (A)		1	
	84-1713-748-00	Shaft For Hinge (A)	1		
33	84-1723-749-00	Shaft For Hinge (B)		1	
	84-1713-749-00	Shaft For Hinge (B)	1		
34	89-1711-050002	Washer 5	4	4	
35	89-2120-200202	Split Pin 2*20	2	2	
36	84-1723-771-00	Flapper Fitting Plate		1	
	84-1713-771-00	Flapper Fitting Plate	1		
37	89-1131-060162	Bolt PW M6*16	5	7	
38	84-1723-781-00	Flapper		1	
	84-1713-781-00	Flapper	1		
39	84-1723-787-00	Flapper Fixing		1	
	84-1713-787-00	Flapper Fixing	1		
40	83-1575-189-00	Flange Cap Nut M6	5	7	
41	89-1711-080002	Washer 8	13	13	
42	89-1571-080042	Cap Nut M8	4	4	

Fig.1 ROTARY COVER & GEAR BOX

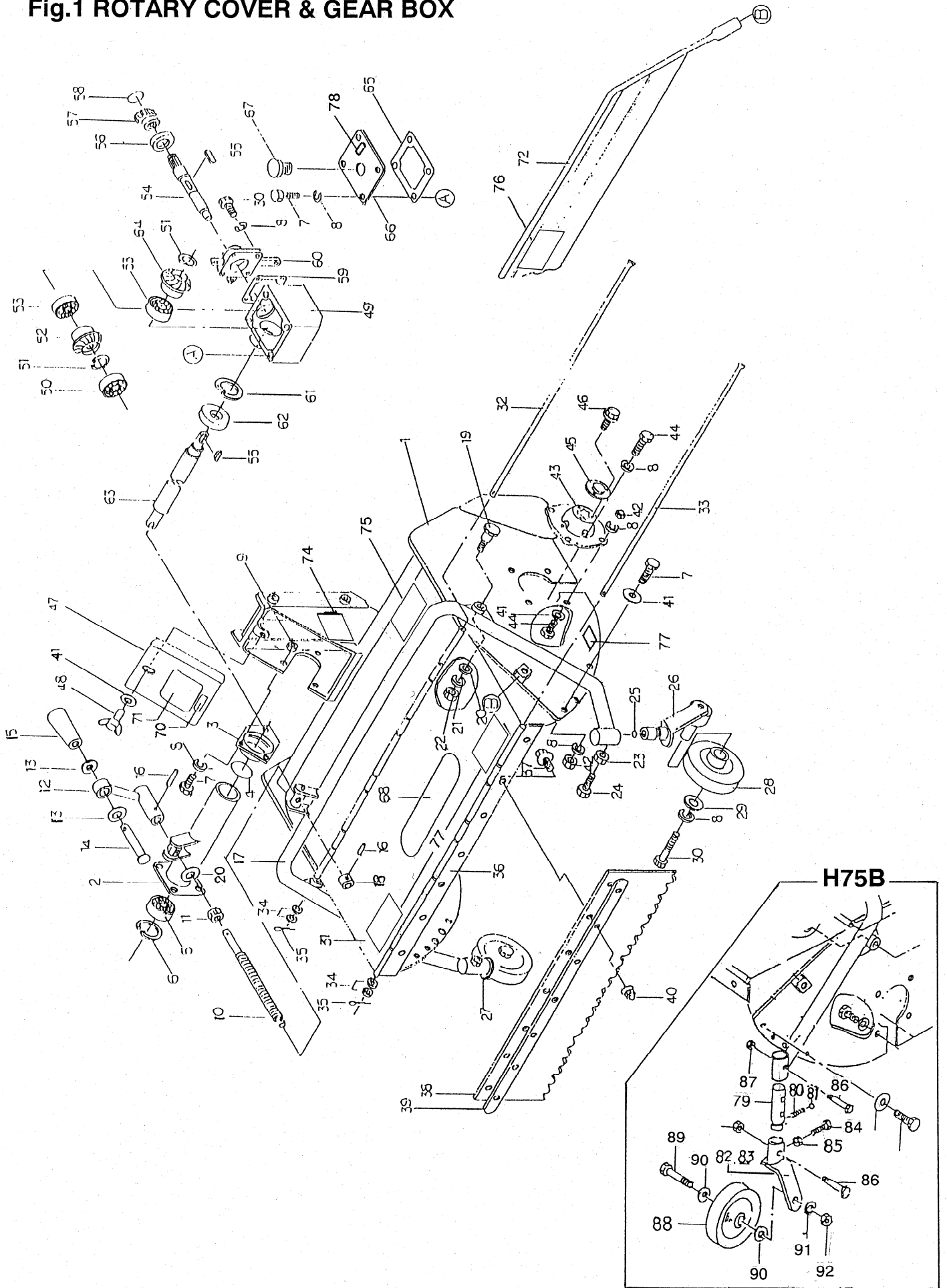


Fig.1 ROTARY COVER & GEAR BOX

Ref.	Parts No.	Parts Name	Quantity		Remarks
			H75B	H90B	
43	80-1610-811-00	B.B. Case Receiver	1	1	
44	89-1111-080252	Bolt M8*25	4	4	
45	80-1610-812-00	B.B. Case Receiver Cover	1	1	
46	89-1131-060122	Bolt PW M6*12	3	3	
47	84-1713-702-00	Cover	1	1	
48	89-1312-080152	Bolt M 8*15	1	1	
49-67	84-1723-600-00	Gear Box Assy		1	
	84-1713-600-00	Gear Box Assy	1		
49-67	84-1723-600-10	Gear Box Assy		1	
	84-1713-600-10	Gear Box Assy	1		
49	84-1713-601-00	Gear Box	1	1	
50	89-3111-062034	Ball Bearing 6203	1	1	
51	89-2511-000200	Snap Ring S20	2	2	
52	80-1410-618-00	Spiral Miter Gear L20	1	1	
53	89-3111-062044	Bearing 6204	2	2	
54	84-1713-616-00	The 1st Shaft	1	1	
55	89-2150-050250	Key 5*5*25	2	2	
56	89-5121-254008	Oil Seal UE 25.40.8	1	1	
57	84-1752-614-00	Joint on PTO	1	1	
58	80-1751-169-00	Ring for Joint on PTO	1	1	
59	84-1713-608-00	Transmission Case PK (B)	1	1	
60	84-1713-605-00	Flange	1	1	
61	89-2512-000470	Snap Ring R47	1	1	
62	89-5121-254708	Oil Seal UE 25.47.8	1	1	
63	84-1723-621-00	AXIS L=532.5		1	*1)
	84-1723-621-10	AXIS L=542.5		1	*5) 1990.Dec.~
	84-1713-621-00	AXIS L=433.5	1		*2)
	84-1713-621-10	AXIS L=443.5	1		*6) 1990.Dec.~
64	80-1410-622-00	Spiral Miter Gear R20	1	1	
65	84-1713-607-00	Gear Case Packing	1	1	
66	84-1713-606-00	Bonnet	1	1	
67	83-1210-684-00	Oil Cap KRM-42	1	1	
68	83-1050-901-00	Label	1	1	
70	83-1450-917-00	Label	1	1	
71	84-1723-904-50	Name Plate		1	
	84-1713-904-50	Name Plate	1		
72	84-1723-733-00	Safety Cover		1	
	84-1713-733-00	Safety Cover	1		
73	83-1633-908-00	Label		1	
74	80-1751-906-00	Label	1	1	
75	83-1415-913-00	Label, Protection for Eyes	1	1	
76	80-1484- A47-00	Label, Caution(large)	1	1	
77	83-1613-907-00	Label, Caution for Hand and Leg	4	4	
78	83-1791-912-00	Label 0.2	1	1	
79-92	80-1610-722-00	Front Wheel (Right) Assy	1		
79-92	80-1610-721-00	Front Wheel (Left) Assy	1		
79	80-1610-724-00	Shaft	2		
80	80-1610-737-00	Spring	2		
81	89-3410-110000	Steel Ball 11	2		
82	80-1610-726-00	Front Wheel Fork (Right)	1		
83	80-1610-725-00	Front Wheel Fork (Left)	1		
84	89-1111-060202	Bolt M6*20	2		

Fig.1 ROTARY COVER & GEAR BOX

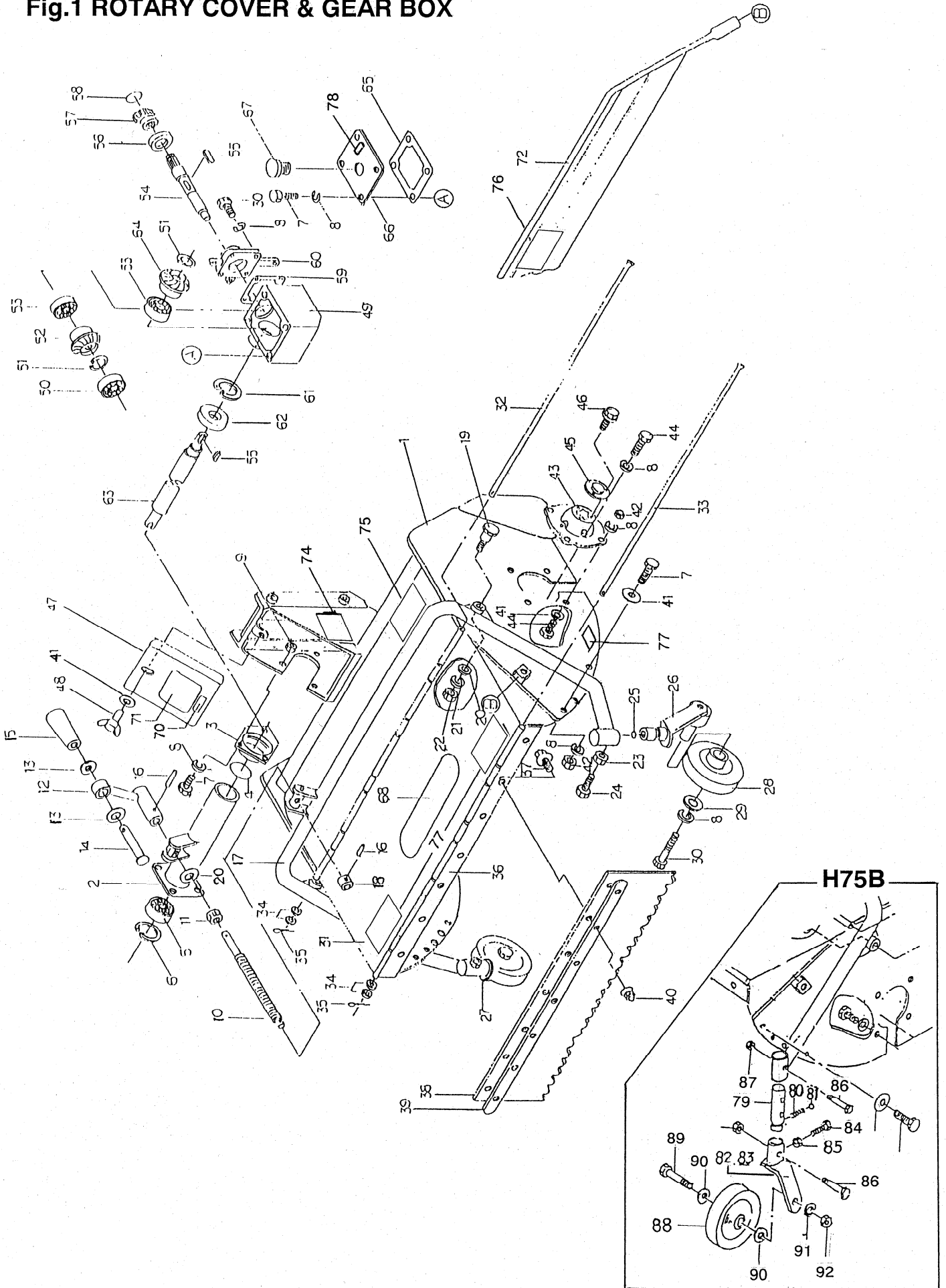


Fig.1 ROTARY COVER & GEAR BOX

Ref.	Parts No.	Parts Name	Quantity		Remarks
			H75B	H90B	
85	89-1511-060042	Nut M6	2		
86	89-1111-100452	Bolt M10*45	4		
87	89-1551-100002	U Nut M10	4		
88	80-1610-727-00	Front Wheel	2		
89	89-1111-120702	Hexagonal Bolt M12*70	2		
90	89-1711-120002	Washer 13*21	4		
91	89-1750-120002	Spring Washer 12	2		
92	89-1511-120042	Nut M12	2		

***1) : Supplied Parts *4) *5) (1 set)**

***2) : Supplied Parts *4) *6) (1 set)**

***3) : Supplied Parts *1) or *2) (1 set)**

Fig.2 BELT COVER & KNIFE DRUM

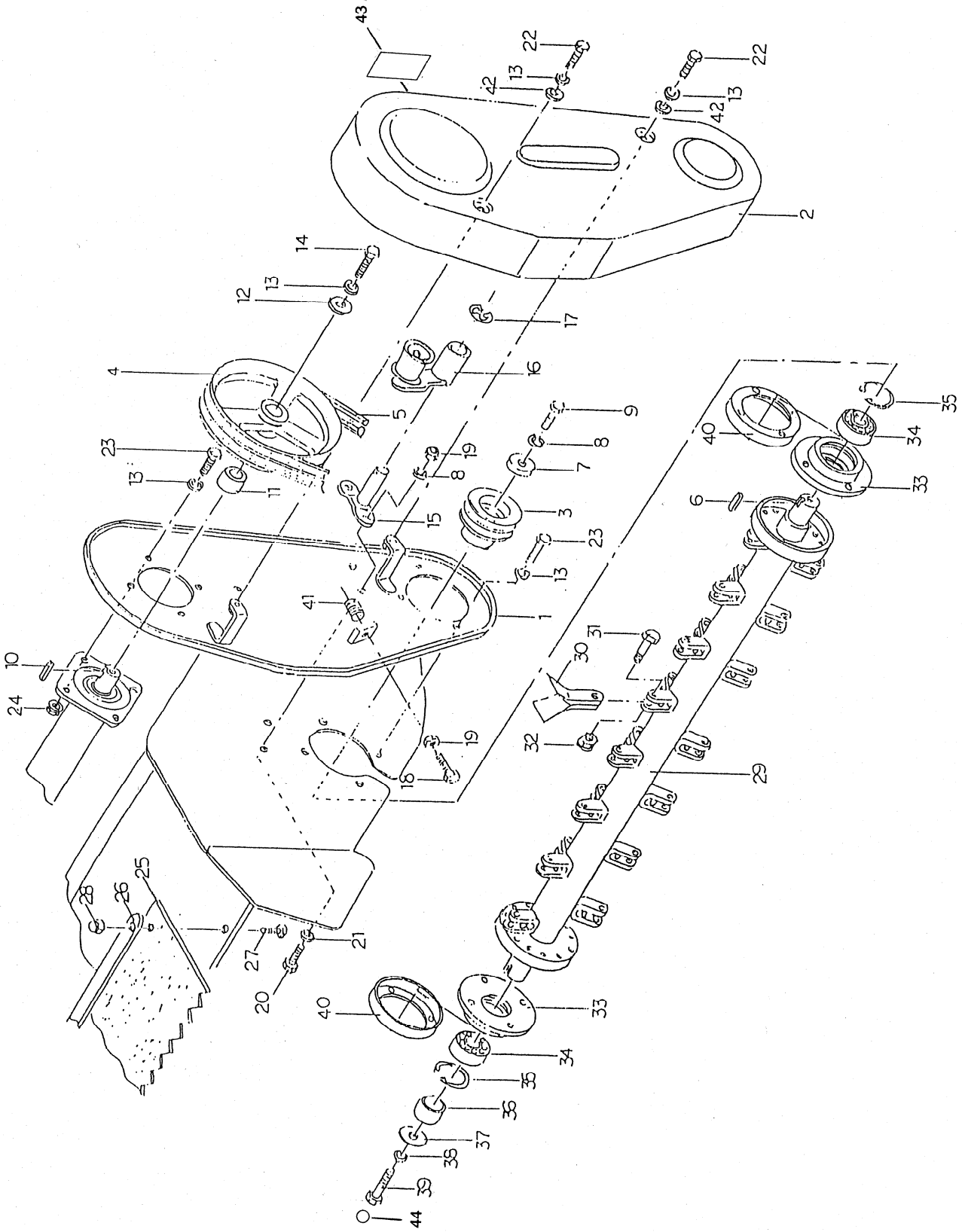


Fig.2 BELT COVER & KNIFE DRUM

Ref.	Parts No.	Parts Name	Quantity		Remarks
			H75B	H90B	
1	84-1713-693-00	Belt Case (IN)	1	1	
2	80-1610-694-00	Belt Case (OUT)	1	1	
3	84-1713-634-10	Pulley 82	1	1	
	84-1713-634-20	Pulley 92	1	1	*4) 1990.Dec.~
4	84-1713-636-10	Pulley 127	1	1	
	84-1713-636-20	Pulley 136	1	1	*4) 1990.Dec.~
5	89-6123-003401	V Belt LB-34	2	2	
	89-6123-003501	V Belt LB-35	2	2	*4) 1990.Dec.~
6	89-2151-070350	Key 7*35	1	1	
7	83-1610-322-00	Pulley Pushing Washer 10*36*6	1	1	
8	89-1750-100002	Spring Washer 10	1	1	
9	89-1113-100352	Bolt (8T) M10*35	1	1	
10	89-2151-050300	Key 5*30	1	1	
11	84-1723-637-00	Pulley Collar 15A 6L	1	1	
	84-1723-635-00	Pulley Collar 15A 4L	1	1	
12	83-1210-313-00	Washer 8*32*3.2	1	1	
13	89-1750-080002	Spring Washer 8	11	11	
14	89-1111-080252	Bolt M8*25	1	1	
15	84-1713-633-00	Tension Arm Shaft	1	1	
16	84-1713-632-00	Tension Arm Assy L=95	1	1	*3)
	84-1713-632-10	Tension Arm Assy L=90	1	1	*4) 1990.Dec.~
17	89-2521-000150	E-Type Ring 15	1	1	
18	84-1713-657-00	Bolt	1	1	
19	89-1511-100042	Nut M10	1	1	
20	89-1111-100252	Bolt M10*25	2	2	
21	89-1711-100002	Washer 10	2	2	
22	89-1111-080142	Bolt M8*14	2	2	
23	89-1111-080162	Bolt M8*16	8	8	
24	89-1631-080042	Nut M8	4	4	
25	84-1723-782-00	Flapper (Rear)		1	
	84-1713-782-00	Flapper (Rear)	1		
26	84-1723-787-00	Flapper Fixing		1	
	84-1713-787-00	Flapper Fixing	1		
27	89-1131-060162	Bolt PW M6*16	5	7	
28	83-1575-189-00	Flange Cap Nut M6	5	7	
29-32	84-1723-800-10	Knife Drum Assy		1	
	84-1713-800-10	Knife Drum Assy	1		
30	80-1610-821-00	Hammer Knife Blade	44	56	
31-32	83-1610-835-00	Knife Bolt Set	22	28	
33	80-1610-804-00	B.B. Case	2	2	
34	89-3115-062064	Ball Bearing 6206 2RS	2	2	
35	89-2512-000620	Snap Ring 62	2	2	
36	80-1610-837-00	Shaft Collar	1	1	
37	83-1610-321-00	Washer 10*36*4.5 (K)	1	1	
38	89-1811-100002	Toothed washer (outside) 10	1	1	
39	83-1610-126-00	Bolt (8T) M10*25	1	1	
40	80-1612-813-00	Dust Cover	2	2	
41	80-1751-536-00	Spring	1	1	
42	89-1711-080002	Washer 8	2	2	
43	80-1488-928-00	Label, Caution for Belt Involving	1	1	
44	80-1610-919-00	Label	1	1	