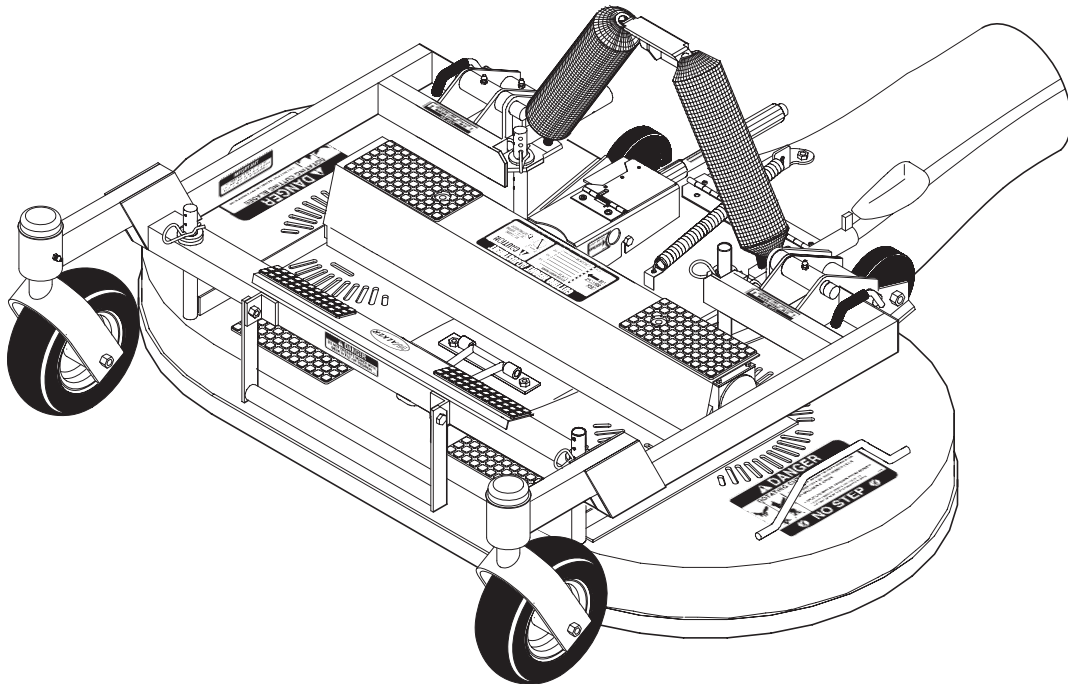


Walker Rider Lawnmowers

ILLUSTRATED PARTS MANUAL

European Deck and Carrier Frame Assemblies (48")



CE

TM

Effective Date:
03-01-06

P/N 5000-18

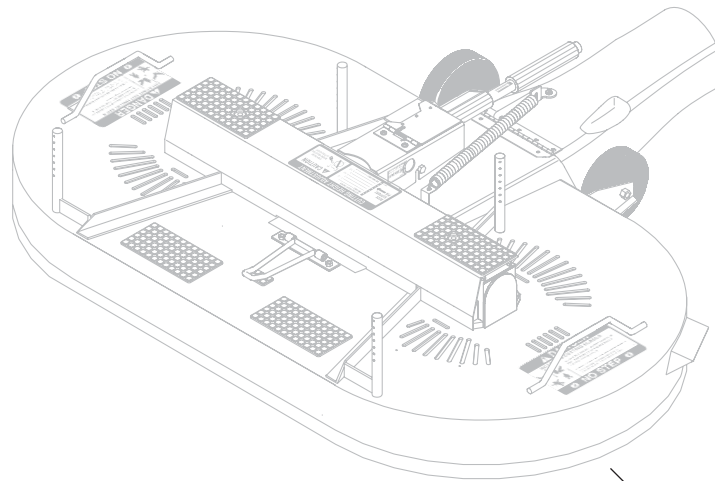
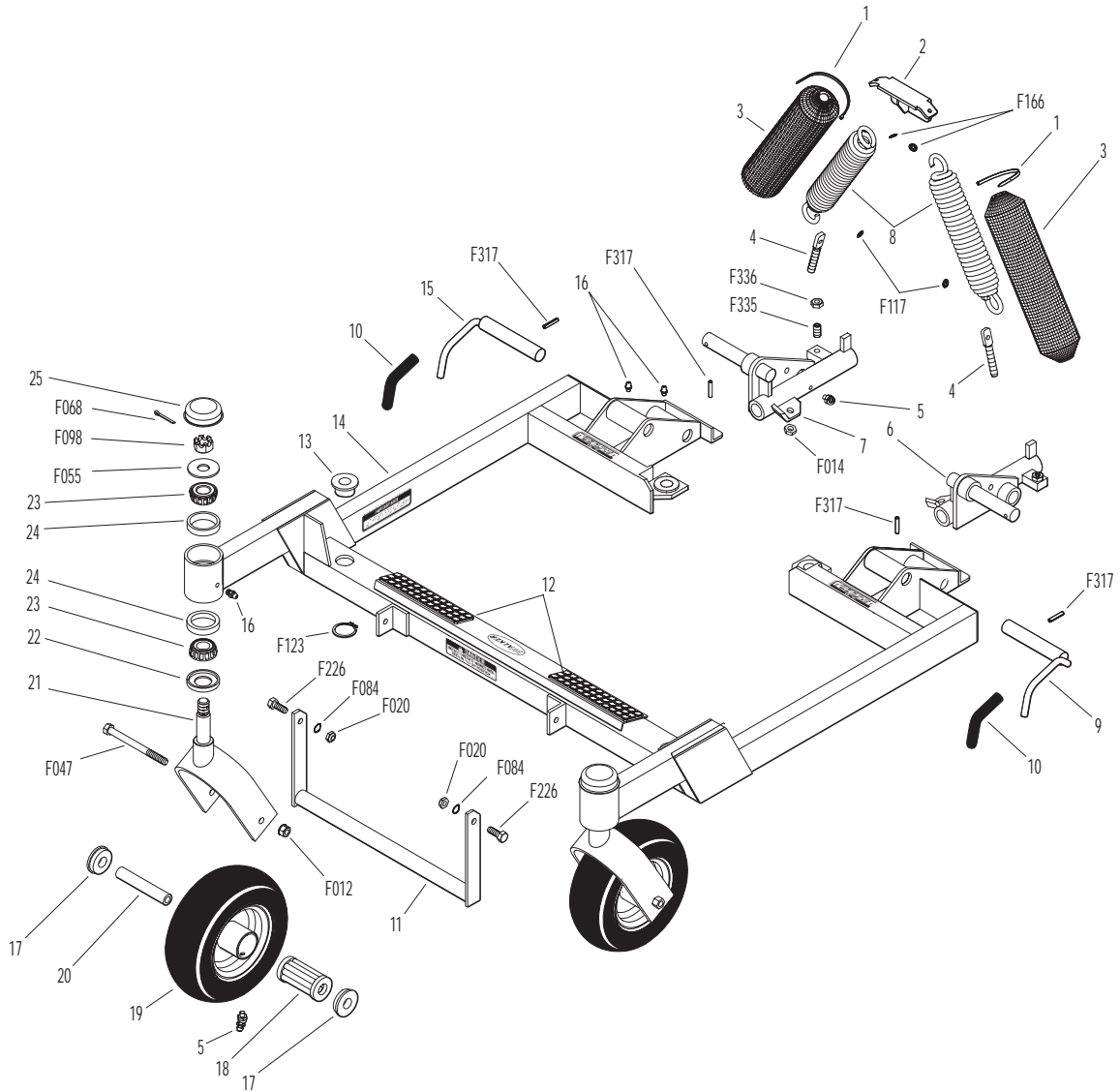
48E INCH COMPLETE CARRIER FRAME ASSEMBLY (P/N 7700-2)

ITEM NO.	PART NO.	DESCRIPTION	NO. REQ'D	ITEM NO.	PART NO.	DESCRIPTION	NO. REQ'D
Spring and Pivot Mount Components				Fasteners			
1	5975-3	Cable Tie (50# x 7")	4	F012		3/8-16 Keps Nut	2
2	5744-1	Spring Clip Bracket	1	F014		3/8-16 ESNA Nut	2
3	5743-1	Spring Cover	2	F020		5/16-18 ESNA Nut	2
4	5743-3	Eyebolt, (3/8-16 x 2)	2	F047		3/8-16 x 4-1/2 Hex Bolt	2
5	5830-3	Grease Fitting (45 Degree)	4	F055		5/8 SAE Washer	2
6	8466-10	Pivot Mount, LH/Adj/	1	F068		1/8 x 1 Cotter Pin	2
7	8466-20	Pivot Mount, RH/Adj.	1	F084		5/16 Wave Spring Washer	2
8	5743-6	Extension Spring (1-1/2 x 7-3/4)	2	F098		5/8-18 Slotted Hex Nut	2
Carrier Frame Components				F117		Retainer Ring	2
9	8674-11	Lever, Deck Lock, LH	1	F123		1" External Snap Ring	4
10	7406-1	Handle Grip (Red)	2	F166		Retainer Ring	4
11	8669	Lift Handle	1	F226		5/16-18 x 7/8 Hex Bolt	2
12	5748-10	Rubber Mat (1-1/2 x 6)	2	F317		3/16 x 1 Split Spring Pin	4
13	5740-2	Deck Pin Bushing (5/8)	4	F335		3/8-16 x 7/8 Set Screw, SS	2
14	8661-2	48" Carrier Frame (Includes Item # 12)	1	F336		3/8-16 Jam Nut	2
	8661-1	48" Carrier Frame w/Forks (Includes Items # 12, 21-23, 25, F055, F068 & F098)	*	* Service Part Only			
15	8674-10	Lever, Deck Lock, RH	1	** May be ordered as a factory-installed option or as a kit for dealer installation. Contact your Walker dealer.			
16	5830	Grease Fitting	6	NOTE: When installing Item # 8 on decks prior to S/N DX-62875, the swivel hook end should be attached to the deck carrier frame.			
Caster Wheel Components							
17	5714-7	Bearing Cap	4				
18	5714-5	Bearing, Caster Wheel	2				
19	5715-4	Caster Wheel, Pneu. (8 x 3.00-4) (Includes Items # 5, 17 & 18)	2				
	5715-10	Tire, Pneumatic (8 x 3.00-4)	*				
	5715-9	Tire Tube, Pneumatic (2.80/2.50-4)	*				
	5715-3	Caster Wheel & Tire/No-Flat (8 x 3.00-4)	**				
	5715-11	Tire, Caster Wheel/No-Flat (8 x 3.00-4)	**				
20	5714-3	Axle Spacer Tube	2				
21	5770-1	Caster Wheel Fork	2				
22	8768-1	Seal	2				
23	8037	Bearing, Cone	4				
24	8769-1	Bearing Cup	4				
25	8769-9	Dust Cap	2				

Use only genuine Walker® replacement parts.

Effective Date 03-01-06

48E INCH COMPLETE CARRIER FRAME ASSEMBLY (P/N 7700-2)



Refer to DGHS48E
DECK ASSEMBLY

DGHS48E DECK ASSEMBLY (P/N 8557)

INCL. OPTIONAL HEAVY DUTY GEARBOXES

ITEM NO.	PART NO.	DESCRIPTION	NO. REQ'D	ITEM NO.	PART NO.	DESCRIPTION	NO. REQ'D
Gearbox and Drive Components				7705-3		48 GHS Blade Set with Hubs (Includes Items # 30-32, F002 & F202)	*
1	8618-2	Cover, PTO Shaft Guard (Includes Items # 2, 3, & F081)	1	33	7775-1	Hitch Pin, LH (Silver) #6	2
2	5161-10	Rubber Flap	1	34	5747-10	Rubber Mat (3 x 6)	2
3	8620-30	Backing Plate, Flap	1	35	8788-1	Rubber Mat (1 x 2)	1
4	8561-1	PTO Shaft Guard	1	36	8558	48 GHS Deck Housing (Includes Items # 34 & 35)	1
	8560-1	PTO Shaft Guard Assembly (Includes Items # 1, 2, 3, 4, F002 & F025)	*	37	7775-2	Hitch Pin, RH (Gold) #6	2
5	7285-15	U-Joint Shaft Assy, 90 Degree, Spline (Includes Items # 25, F069 & F295)	1	38	5727-1	Washer Shim (5/8 ID)	4
6	7275-16	U-Joint Tube Assy, Spline	1	39	NS	Deck Serial Number Plate	1
7	5704-59	Gearbox & Tube Assembly (Includes Items # 12-21 & F229)	1	Fasteners			
	5704-47	Heavy Duty Gearbox & Tube Assembly (Includes Items # 12-15, 17-21 & F229)	**	F002		10-24 Keps Nut	9
8	8494	Discharge Chute Assembly with Spring Mount (Includes Items # 9, 11, F002, F079, F085, F087, F129)	*	F004		1/4-20 Keps Nut	2
9	8489	Spring Mount, Chute	1	F005		1/4-20 ESNA Nut	2
10	8677	Extension Spring (1 x 6-1/16)	1	F013		3/8-16 Whiz Locknut	6
11	8488	Chute Hinge (2 x 8)	1	F018		5/8-18 Hex Nut	2
12	6054	Spline Coupling	4	F025		10-24 x 3/8 PPHMS	2
13	P007	Gasket, Cap (Peerless #788030)	4	F029		1/4-20 x 1/2 Hex Bolt	2
14	5067	Gearbox Connector Tube (11-5/8)	1	F036		1/4-20 x 1/2 SBH Screw	2
15	6732-7	Connecting Shaft (9-1/8)	1	F038		3/8-16 x 1 Hex Bolt	4***
16	5706-4	Seal Protector Plate	2	F039		3/8-16 x 1-1/4 Hex Bolt	4
17	5052-10	Gearbox (LH Rotation)	2	F050		1/4 SAE Washer	4
	5052-7	Heavy Duty Gearbox (LH Rotation)	**	F055		5/8 SAE Washer	2
18	5704-1	Gearbox Cover Support	2	F056		5/8 Split Lock Washer	2
19	7751-16	Tee Gearbox (1.2:1 Ratio), Shear	1	F059		3/8 Wave Spring Washer	2
	7751-5	Heavy Duty Tee Gearbox(1.2:1 Ratio)	**	F069		3/32 x 1/2 Cotter Pin	1
20	6732-1	Connecting Shaft (2")	1	F079		A/A66D Aluminum Pop Rivet	*
21	5062	Gearbox Connector Tube (4-3/8)	1	F081		A/A45D Aluminum Pop Rivet	3
22	5052-3	1.375 x .750 x .187 Washer	4	F085		3/16 Rivet Backup Washer	*
23	5747-12	Rubber Mat (3 x 6)	4	F087		#10 x 7/8 Fender Washer	2
24	7785-3	48" Gearbox Cover (Includes Item # 23)	1	F124		10-32 x 3/8 Taptite Machine Screw	6
25	5830	Grease Fitting	1	F129		10-24 x 1/2 PTHMS	3
26	8067-10	Shear Pin w/Cotter (Set of 5) (Includes Item # F069)	*	F136		AN960C416L Washer	20
				F179		1/4-20 x 1 Hex Bolt	4
				F202		10-24 x 5/8 SHC Screw, GR5 SS	4
				F206		#2 x 3/16 Drive Pin	2
				F211		1/4-20 x 7/8 Hex Bolt	16
				F229		C-Clip (13/16)	4
				F246		1/4-20 x 1/2 PTHMS	2
				F278		3/8 Split Lock Washer	4***
				F295		3/16 x 1-1/2 Split Spring Pin	1
				F403		1/4-20 x 1/2 PTHMS SS	2
Deck Housing Components							
27	8670	Tilt-Up Hook	1	*	Service Part Only		
28	5162-11	Roller Wheel (5" Poly) (Includes Item # F059)	2	**	Item(s) used on the Heavy Duty version of standard gearboxes. The Heavy Duty cast iron gearboxes are interchangeable with Standard aluminum gearboxes.		
29	8490	Roller Wheel Axle Bolt	2	***	Used on Heavy Duty gearbox configuration.		
30	7705-1	Blade, 25" (RH Rotation)	1				
31	5706	Blade Hub & Trash Guard	2				
32	7705-2	Blade, 25" (LH Rotation)	1				

Use only genuine **Walker**[®] replacement parts.

Effective Date 03-01-06

DGHS48E DECK ASSEMBLY (P/N 8557)

INCL. OPTIONAL HEAVY DUTY GEARBOXES

