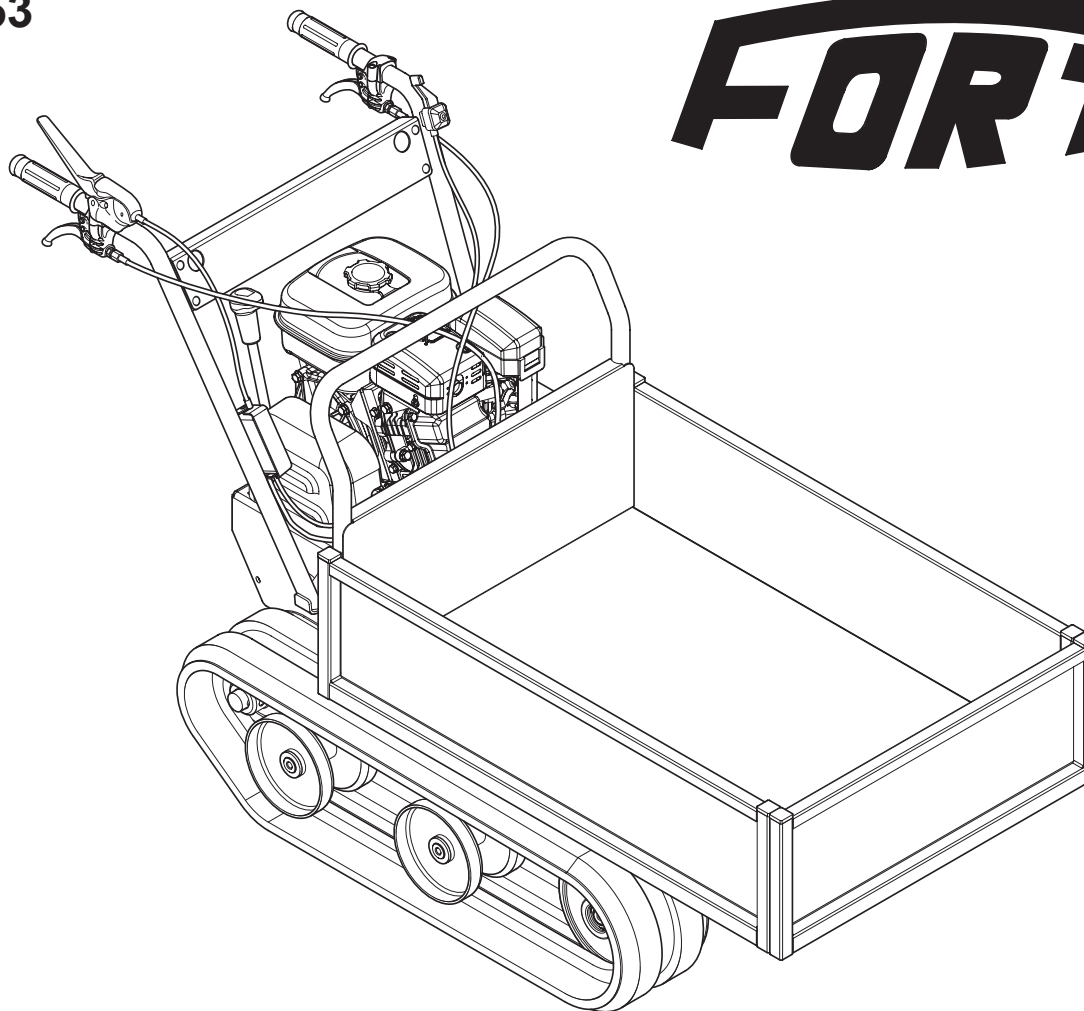


Mod. MECH 35 - F300 Cod. 1553

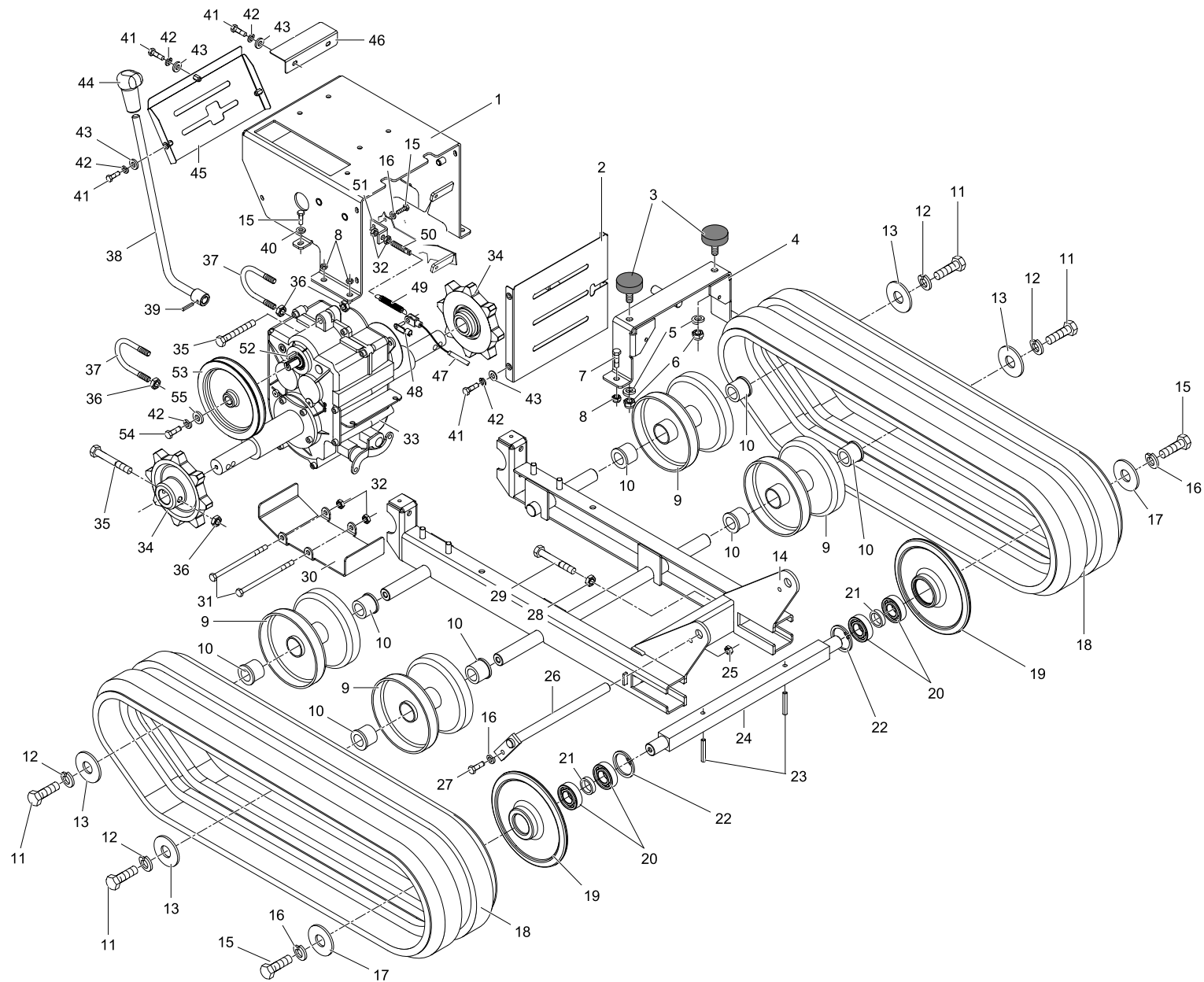
**FORT**®

PARTI DI RICAMBIO  
*SPAREPARTS*  
PIECES DE RECHANGE  
*ERSATZTEILLISTE*



Tab.	01	<b>TELAIO</b>	FRAME	CHASSIS	RAHMEN
Tab.	02	<b>TRASMISSIONE</b>	SHAFTING	TRANSMISSION	TRANSMISSION
Tab.	03	<b>ACCESSORI</b>	ACCESSORIES	ACCESSOIRES	ZUBEHÖR





## TAB. 01\_A

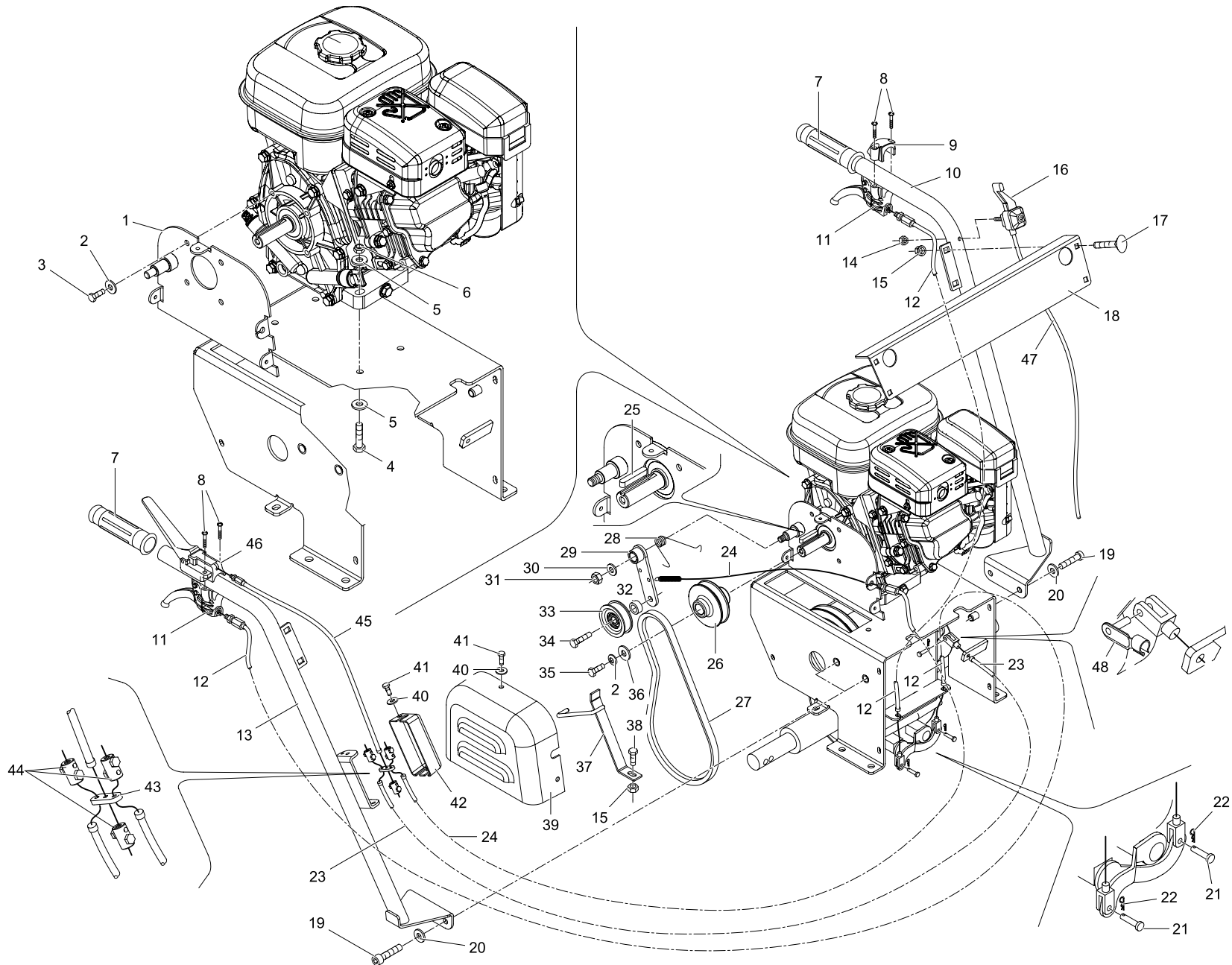
TELAIO - FRAME  
CHASSIS - RAHMEN

REF.	Q.	COD.	DESCRIZIONE	DESCRIPTION	DESCRIPTION	BENENNUNG
01	01	15535005	SUPP. MOTORE X F300	SUPPORT	SUPPORT	HALTERUNG
02	01	15535016	COPERCHIO ANTERIORE CAMBIO F300	COVER	COUVERCLE	DECKEL
03	02	14680604	PARACOLPI GOMMA C/PIEDE M12 15X50	BUFFER	BOUTOIR	PUFFER
04	01	15535010	SUPPORTO GOMMINI F300	SUPPORT	SUPPORT	HALTERUNG
05	02	19955275	ROSETTA ELAS.D.12 ZB RINF DIN 128B	SPRING WASHER	RONDELLE ELASTIQUE	FEDERSCHREIBE
06	02	19954047	DADO ESAG. M12 ZN B. NORM. UNI 5588	NUT	ECROU	MUTTER
07	02	19952129	VITE TCEI M10X25 ZN B. UNI 5931	SCREW	VIS	SCHRAUBE
08	06	19954210	DADO AUTOBL. M10 ZN ALTO DIN 982	NUT	ECROU	MUTTER
09	04	15315020	RULLO 158X60 PER MINITRANS.	ROLLER	GALET	ROLLE
10	08	15315031	BOCCOLA IN NYLON PER RULLO	BUSH	DOUILLE	BÜCHSE
11	04	19952730	VITE TE M10X25 ZN B. UNI 5739	SCREW	VIS	SCHRAUBE
12	04	19955274	ROSETTA ELAS.D.10 ZN B. DIN 128B	SPRING WASHER	RONDELLE ELASTIQUE	FEDERSCHREIBE
13	04	19955021	ROND.PIANA D.10X40X2,5 ZB GREMBIUL.	PLAIN WASHER	RONDELLE	SCHEIBE
14	01	15535003	TELAIO CARRO F300	FRAME BODY	CHASSIS	GESTELL
15	05	19952715	VITE TE M8X16 ZN B. UNI 5739	SCREW	VIS	SCHRAUBE
16	04	19955273	ROSETTA ELAS.D.8 RINFORZ. DIN 127/B	SPRING WASHER	RONDELLE ELASTIQUE	FEDERSCHREIBE
17	02	19955010	ROND.PIANA D.8X32X2,5 ZN.B. UNI6592	PLAIN WASHER	RONDELLE	SCHEIBE
18	02	12329953	CINGOLO IN GOMMA 180x60x34	TRACK	CHENILLE	RAUPEN
19	02	15533001	RUOTA TENDICINGOLO X F300	ROLLER	GALET	ROLLE
20	04	19902327	CUSCIN. 6205-2RS 2F	BEARING	ROULEMENT	KUGELLAGER
21	02	15535013	DISTANZ. D.25,7xD.33,7x8 ZB.	SPACER	ENTRETOISE	DISTANZSTÜCK
22	02	19955652	ANELLO ELASTICO I52 UNI 7437	LOCKRING	ARRETOIR	SICHERUNGSRING
23	02	19955743	SPINA ELASTICA 8X45 SPIR. UNI 6875	ROLL PIN	GOUPILLE ELASTIQUE	STIFT
24	01	15535004	SUPP. RUOTE TENDICINGOLO X F300	SUPPORT	SUPPORT	HALTERUNG
25	01	19954254	DADO AUTOBL. M8 ZN BASSO DIN 985	NUT	ECROU	MUTTER
26	01	15535012	PERNO X BLOCCO CASSONE F300	PIN	AXE	BOLZEN
27	01	19952729	VITE TE M8X25 ZN B. UNI 5739	SCREW	VIS	SCHRAUBE
28	02	19954080	DADO ESAG. M16 ZN B. BASSO UNI 5589	NUT	ECROU	MUTTER
29	02	19952678	VITE TE M16X100 ZN B. UNI 5739	SCREW	VIS	SCHRAUBE
30	01	15535019	PROTEZIONE INFERIORE CAMBIO F300	BUMPER	PARE-CHOCS	STOSSTANGE
31	02	19952790	VITE TE M8X130 ZN B. UNI 5737	SCREW	VIS	SCHRAUBE
32	04	19954045	DADO ESAG. M8 ZN B. NORM. UNI 5588	NUT	ECROU	MUTTER
33	01	15535000	CAMBIO 3 VELOCITA' + 1 RM X F300	GEARBOX	CHANGEMENT DE VITESSE	GETRIEBE
34	02	15315024	RUOTA MOTRICE DENTATA Z=8 PASSO=60	DRIVEN WHEEL	ROUE MOTRICE	TREIBRAD

## TAB. 01\_B

TELAIO - FRAME  
CHASSIS - RAHMEN

REF.	Q.	COD.	DESCRIZIONE	DESCRIPTION	DESCRIPTION	BENENNUNG
35	03	19952644	VITE TE M10X65 ZN B. UNI 5737	SCREW	VIS	SCHRAUBE
36	07	19954255	DADO AUTOBL. M10 ZN BASSO DIN 985	NUT	ECROU	MUTTER
37	02	15535007	TIRANTE AD U BLOCCO CAMBIO F300	ROD	TIGE	STANGE
38	01	15535008	LEVA ESTERNA CAMBIO F300	LEVER	LEVIER	HEBEL
39	01	19955753	SPINA ELASTICA 5X30 SPIR. UNI 6875	ROLL PIN	GOUPILLE ELASTIQUE	STIFT
40	02	19955052	ROND.PIANA D.8X16X1,5 ZN.B. UNI6592	PLAIN WASHER	RONDELLE	SCHEIBE
41	09	19952720	VITE TE M6X20 ZN B. UNI 5739	SCREW	VIS	SCHRAUBE
42	10	19955257	ROSETTA ELAS.D.6 RINFORZ. DIN 127/B	SPRING WASHER	RONDELLE ELASTIQUE	FEDERSCHREIBE
43	09	19955007	ROND.PIANA D.6X18X1,5 ZN.B. UNI6592	PLAIN WASHER	RONDELLE	SCHEIBE
44	01	14660193	POMELLO MARCE GIALLO D. 14	KNOB	BOUTON	KNEBELGRIFF
45	01	15535017	COPERCHIO POSTERIORE CAMBIO F300	COVER	COUVERCLE	DECKEL
46	01	15535014	PIASTRINA VISUALIZZAZIO. MARCE F300	PLATE	PLAQUE	PLATTE
47	01	15538004	TRASM. C/DO FRENO STAZIONAMEN. F300	WIRE	CABLE	SEILZUG
48	01	15001096	PERNO CON MOLLA 6X24	PIN	AXE	BOLZEN
49	01	1531704701	MOLLA X DIABLO BENZ. / HYDRO	SPRING	RESSORT	FEDER
50	01	15535028	ASTA FILET. TIRO MOLLA FRENO F300	ROD	TIGE	STANGE
51	01	15535029	SUPP. ASTA TIRO MOLLA FRENO F300	SUPPORT	SUPPORT	HALTERUNG
52	01	19956316	LINGUETTA 5X5X20 UNI 6604	SPLINE	CLAVETTE	KEIL
53	01	15531002	PULEGGIA CONDOTTA CAMBIO X F300	PULLEY	POULIE	RIEMENSCHLEIBE
54	01	19952714	VITE TE M6X16 ZN B. UNI 5739	SCREW	VIS	SCHRAUBE
55	01	19955008	ROND.PIANA D.6X24X2 ZN.B. UNI6592	PLAIN WASHER	RONDELLE	SCHEIBE



## TAB. 02\_A

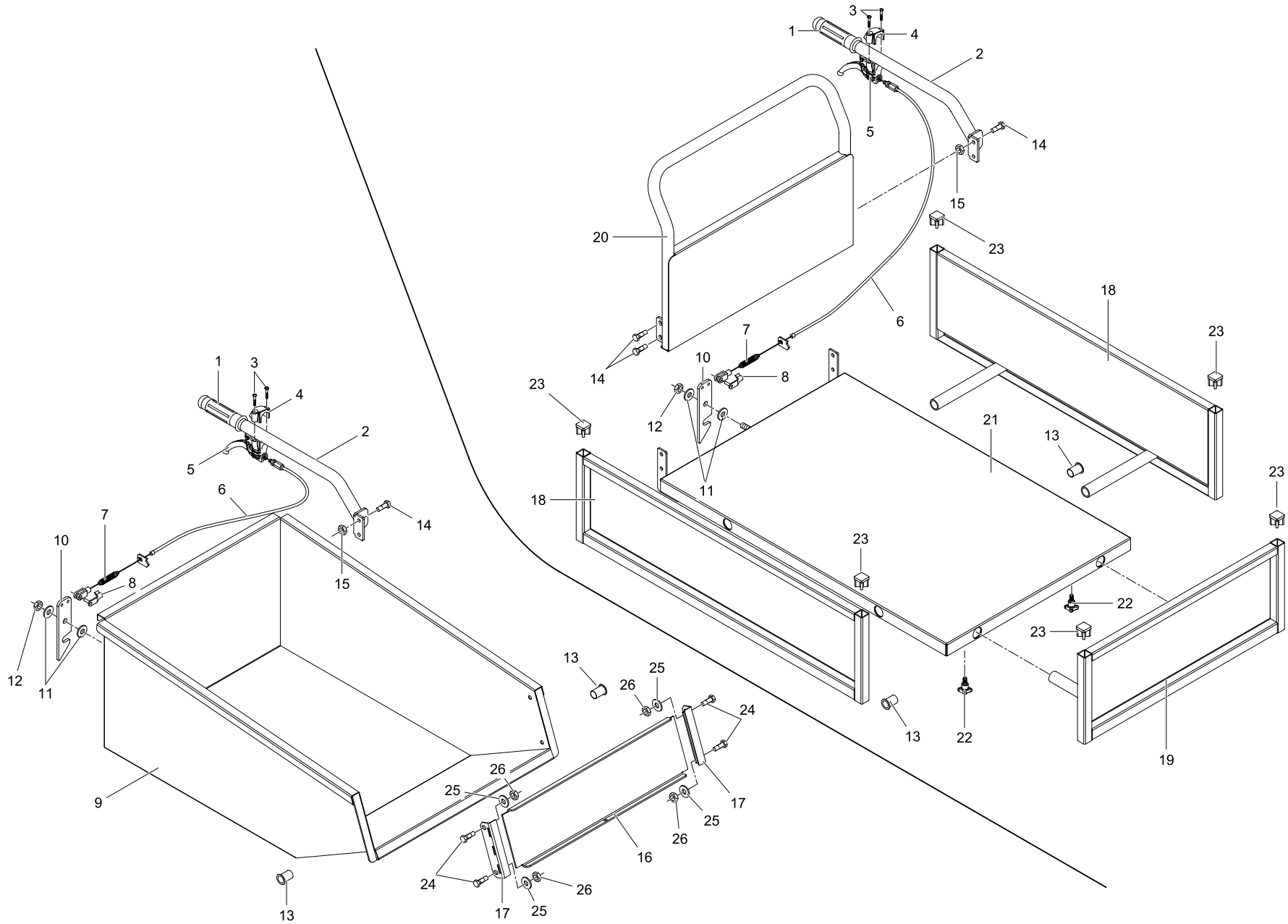
**TRASMISSIONE - SHAFTING**  
**TRANSMISSION - TRANSMISSION**


REF.	Q.	COD.	DESCRIZIONE	DESCRIPTION	DESCRIPTION	BENENNUNG
01	01	15535006	PIASTRA MOTORE X F300	PLATE	PLAQUE	PLATTE
02	05	19955408	DISCO ELASTICO D.8	SPRING WASHER	RONDELLE ELASTIQUE	FEDERSCHREIBE
03	04	19952715	VITE TE M8X16 ZN B. UNI 5739	SCREW	VIS	SCHRAUBE
04	04	19952612	VITE TE M8X40 ZN B. UNI 5737	SCREW	VIS	SCHRAUBE
05	08	19955052	ROND.PIANA D.8X16X1,5 ZN.B. UNI6592	PLAIN WASHER	RONDELLE	SCHEIBE
06	04	19954208	DADO AUTOBL. M8 ZN ALTO DIN 982	NUT	ECROU	MUTTER
07	02	14680376	MANOPOLA D.27 S/COLLARINO	GRIP	POIGNEE	HANDGRIFF
08	04	14680127	VITE X BLOCCH. SUPP. LEVA IN PLAST.	SCREW	VIS	SCHRAUBE
09	01	14680126	BLOCCH. SUPP. LEVA IN PLASTICA D.27	SUPPORT	SUPPORT	HALTERUNG
10	01	15535027	STEGOLE DI GUIDA SX F300	HANDLEBARS	MANCHERONS	FÜHRUNGSHOLM
11	02	17538001	LEVA X TRASM. STERZATA F300	LEVER	LEVIER	HEBEL
12	02	15538001	TRASM. STERZATA C/LEVA MINITR. F300	WIRE	CABLE	SEILZUG
13	01	15535002	STEGOLE DI GUIDA DX F300	HANDLEBARS	MANCHERONS	FÜHRUNGSHOLM
14	01	19954206	DADO AUTOBL. M6 ZN ALTO DIN 982	NUT	ECROU	MUTTER
15	05	19953908	DADO ESAG. M8 C/ROND. ZN B.	NUT	ECROU	MUTTER
16	01	14660203	MANETTINO GAS M6X65 FONDO BASSO	LEVER, THROTTLE	ACCELERATEUR	GASHEBEL
17	04	19951805	VITE TTQS M8X16 ZN B. UNI 5731	SCREW	VIS	SCHRAUBE
18	01	15535018	RINFORZO STEGOLA F300	PLATE	PLAQUE	PLATTE
19	04	19952129	VITE TCEI M10X25 ZN B. UNI 5931	SCREW	VIS	SCHRAUBE
20	04	19955274	ROSETTA ELAS.D.10 ZN B. DIN 128B	SPRING WASHER	RONDELLE ELASTIQUE	FEDERSCHREIBE
21	02	17538002	PERNO X TRASM. STERZATA F300	PIN	AXE	BOLZEN
22	02	17538003	COPPIGLIA X TRASM. STERZATA F300	COTTER PIN	GOUPILLE FENDEU	SPLINT
23	01	15538004	TRASM. C/DO FRENO STAZIONAMEN. F300	WIRE	CABLE	SEILZUG
24	01	15538003	TRASM. TIROCINGHIA CAMBIO F300	WIRE	CABLE	SEILZUG
25	01	19956350	LINGUETTA 4,75X4,75X35	SPLINE	CLAVETTE	KEIL
26	01	15531001	PULEGGIA MOTORE MINITRANSPORT. F300	PULLEY	POULIE	RIEMENSCHIEBE
27	01	14681052OPT	CINGHIA X13x785 6T6K (ex AX 30 K)	BELT	COURROIE	RIEMEN
28	01	15001054	MOLLA PICCOLA RIC. TENDICIN. MZ TRE	SPRING	RESSORT	FEDER
29	01	15885012	TENDITORE GALOPPINO PTO MINIHYDRO	LEVER	LEVIER	HEBEL
30	01	19955053	ROND.PIANA D.10X21X2 ZN.B. UNI6592	PLAIN WASHER	RONDELLE	SCHEIBE
31	01	19954210	DADO AUTOBL. M10 ZN ALTO DIN 982	NUT	ECROU	MUTTER
32	01	15315105	DISTANZ. SP.10 X LEVA TENDIT. 1^2^	SPACER	ENTRETOISE	DISTANZSTÜCK
33	01	15855031	GALOPPINO TENDIC. D.54 A 2 LABBRA	PULLEY	POULIE	RIEMENSCHIEBE
34	01	19952731	VITE TE M12X25 ZN B. UNI 5739	SCREW	VIS	SCHRAUBE

## TAB. 02\_B

**TRASMISSIONE - SHAFTING**  
**TRANSMISSION - TRANSMISSION**


REF.	Q.	COD.	DESCRIZIONE	DESCRIPTION	DESCRIPTION	BENENNUNG
35	01	19950106	VITE TE 5/16 X 1" UNF	SCREW	VIS	SCHRAUBE
36	01	19955009	ROND.PIANA D.8X24X2,5 ZN.B. UNI6593	PLAIN WASHER	RONDELLE	SCHEIBE
37	01	15535011	GUIDACINGHIA CAMBIO PER F300	BELT DRIVE	GUIDE-COURROIE	RIEMENFÜHRUNG
38	01	19951718	VITE TE M8X20 C/ROND. ZIGRIN. ZN B.	SCREW	VIS	SCHRAUBE
39	01	15536001	CARTER COPRI CINGHIA X F300	COVER	COUVERCLE	DECKEL
40	05	19955007	ROND.PIANA D.6X18X1,5 ZN.B. UNI6592	PLAIN WASHER	RONDELLE	SCHEIBE
41	05	19952709	VITE TE M6X12 ZN B. UNI 5739	SCREW	VIS	SCHRAUBE
42	01	15536002	COPERCHIETTO COPRI FILI F300	COVER	COUVERCLE	DECKEL
43	01	15535015	PIASTRINA X TRASMISSIONI F300	PLATE	PLAQUE	PLATTE
44	03	14660243	MORSETTO PIATTO A 2 VITI	CLAMP	SERRE-CABLE	SEILKLEMME
45	01	15538002	TRASM. COMANDO DOPPIO C/LEVA F300	WIRE	CABLE	SEILZUG
46	01	17538004	LEVA X TRASM. COMANDO DOPPIO F300	LEVER	LEVIER	HEBEL
47	01	15538005	TRASM. GAS MINITRANSPORTER F300	WIRE	CABLE	SEILZUG
48	01	15001096	PERNO CON MOLLA 6X24	PIN	AXE	BOLZEN



## TAB. 03

ACCESSORI - ACCESSORIES  
ACCESSOIRES - ZUBEHÖR

REF.	Q.	COD.	DESCRIZIONE	DESCRIPTION	DESCRIPTION	BENENNUNG
01	02	14680376	MANOPOLA D.27 S/COLLARINO	GRIP	POIGNEE	HANDGRIFF
02	02	15535024	MANICO COMANDO SBLOCCO CASSONE F300	LEVER	LEVIER	HEBEL
03	04	14680127	VITE X BLOCCH. SUPP. LEVA IN PLAST.	SCREW	VIS	SCHRAUBE
04	02	14680126	BLOCCH. SUPP. LEVA IN PLASTICA D.27	SUPPORT	SUPPORT	HALTERUNG
05	02	17538001	LEVA X TRASM. STERZATA F300	LEVER	LEVIER	HEBEL
06	02	15538006	TRASM. C/DO SGANCIO ACCESS. C/LEVA	WIRE	CABLE	SEILZUG
07	02	15001012	MOLLA BICONICA RICHIAMO FRIZIONE	SPRING	RESSORT	FEDER
08	02	15001096	PERNO CON MOLLA 6X24	PIN	AXE	BOLZEN
09	01	15535025	DUMPER F300	DUMPER	DUMPER	DUMPER
10	02	15535009	LEVA SGANCIO ACCESSORI F300	LEVER	LEVIER	HEBEL
11	04	19955013	ROND.PIANA D.12X36X3 ZN.B. UNI6593	PLAIN WASHER	RONDELLE	SCHEIBE
12	02	19954256	DADO AUTOBL. M12 ZN BASSO DIN 985	NUT	ECROU	MUTTER
13	04	19903511	BOCCOLA FLANGIATA GFM 18-20-30	BUSH	DOUILLE	BÜCHSE
14	06	19951718	VITE TE M8X20 C/ROND. ZIGRIN. ZN B.	SCREW	VIS	SCHRAUBE
15	06	19953908	DADO ESAG. M8 C/ROND. ZN B.	NUT	ECROU	MUTTER
16	01	15535026	SPONDA X DUMPER F300	BANK CASE	BANQUE GRAND CAS	UFER TRUHE
17	02	15315184	GUIDA X SPONDA DUMPER F400	SUPPORT	SUPPORT	HALTERUNG
18	02	15535023	SPONDA LATERALE CASSONE F300	BANK CASE	BANQUE GRAND CAS	UFER TRUHE
19	01	15535022	SPONDA ANTERIORE CASSONE F300	BANK CASE	BANQUE GRAND CAS	UFER TRUHE
20	01	15535021	PROTEZIONE POSTERIORE CASSONE F300	COVER	COUVERCLE	DECKEL
21	01	15535020	BASE CASSONE F300	BODY	CAISSE	PRITSCH
22	06	14660177	VOLANTINO A CROCE C/PERNO M8 L=16	KNOB	TIRETTE	KNOBGRIFF
23	06	14680113	TAPPO CHIUDI TUBO 25x25x2 A LAMELLE	PLUG	BOUCHON	STOPFEN
24	04	19952715	VITE TE M8X16 ZN B. UNI 5739	SCREW	VIS	SCHRAUBE
25	04	19955052	ROND.PIANA D.8X16X1,5 ZN.B. UNI6592	PLAIN WASHER	RONDELLE	SCHEIBE
26	04	19954254	DADO AUTOBL. M8 ZN BASSO DIN 985	NUT	ECROU	MUTTER