



# WALKER

## **A10 Dethatcher Attachment**

# **Operator's Manual**

Safety, Assembly, Operation, and Maintenance

Compatible with decks: 36", 42", 48" and 52"



### **Please Read and Save These Instructions**

For Safety, Read All Assembly and Operation Instructions  
Prior to Operating Attachment

Beginning S/N: 2018-22223

P/N: 6605-15



## Foreword

**Thank you.** . .for purchasing a Walker Dethatcher Attachment. Every effort has been made to provide you with the most reliable machine on the market, and we are sure you will be among our many satisfied customers. If for any reason this product does not perform to your expectations, please contact your local dealer. Every customer is important to us. Your satisfaction is our goal.

**Please.** . .read this manual thoroughly! Before you operate your machine, please read this entire manual. Some of the information is crucial for proper operation - it will help protect your investment and ensure that the machine performs to your satisfaction. Some of the information is important to your safety, and must be read and understood to help prevent possible injury to the operator or others. If anything in this manual is confusing or hard to understand, please contact your local authorized dealer or call our service department, at (970) 221-5614, for clarification before operating or servicing this machine.

This manual covers the A10 Dethatcher Attachment.

**All shields and guards must be in place for the proper and safe operation of this machine.** Where they are shown removed in this manual, it is for illustration purposes only. **Do not operate this machine unless all shields and guards are in place.**

Walker Mfg. Co. is continually striving to improve the design and performance of its products. We reserve the right to make changes in specifications and design without thereby incurring any obligation relative to previously manufactured products.

Sincerely,

WALKER MANUFACTURING  
COMPANY

Bob Walker, President

# Table of Contents

<b>General Information</b> _____	1
HIGHLIGHTED INFORMATION_____	1
GLOSSARY_____	1
IDENTIFYING NUMBER LOCATIONS_____	1
SERVICING OF DETHATCHER_____	2
UNIT DESCRIPTION_____	2
<b>Specifications</b> _____	3
<b>Component Identification</b> _____	4
<b>Safety Instructions</b> _____	5
BEFORE OPERATING_____	5
OPERATING_____	6
MAINTENANCE_____	8
<b>Assembly Instructions</b> _____	9
ATTACH DETHATCHER TO DECK_____	10
ADJUST TINES_____	11
<b>Operating Instructions</b> _____	12
OPERATING THE DETHATCHER_____	12
TINE ACTION_____	12
<b>Storage Instructions</b> _____	13
WALL BRACKET (OPTIONAL)_____	13
END OF SEASON_____	13
<b>Maintenance Instructions</b> _____	13
<b>Parts List/Diagram</b> _____	15
MAINTENANCE AND SERVICE RECORDS SHEET_____	17
<b>Warranty</b> _____	20

# General Information

## HIGHLIGHTED INFORMATION

Walker Manufacturing recommends that any service requiring special training or tools be performed by an authorized Walker Tractor dealer. There are several general practices to be aware of in the area of safety. Most accidents associated with the operation or maintenance of a Walker Tractor are caused by disregarding basic safety precautions or specific warnings. Such accidents, in most cases, can be prevented by being aware of the dangers present.

Information of special importance has been high-lighted in bold type in this manual. Refer to **Safety Instructions** for the meanings of **DANGER**, **WARNING**, **CAUTION**, **IMPORTANT**, and **NOTE**.

## GLOSSARY

There are many terms that are either unique to this equipment or that are used as acronyms. The following terms and their definitions will help while using this manual:

- **DECK** is the mowing attachment mounted on the front of the tractor which includes the carrier frame, deck housing, blade spindles, and cutter blades.
- **FORWARD SPEED CONTROL (FSC)** controls the maximum forward speed of the tractor; functioning as a cruise control.
- **LEFT HAND (LH)** refers to the left-hand side of the tractor when the operator is seated facing forward in the tractor seat.
- **MACHINE** consists of the dethatcher, tractor, and deck functioning as a single unit.
- **POWER TAKE-OFF (PTO)** transmits engine power to run the cutter blades and GHS blower.
- **RIGHT HAND (RH)** refers to the right-hand side of the tractor when the operator is seated facing forward in the tractor seat.
- **STEERING LEVERS** steer the tractor by controlling the two transaxles.
- **TRACTOR** is the prime mover, including the engine, drivetrain, operator seat, and controls to operate the mower.

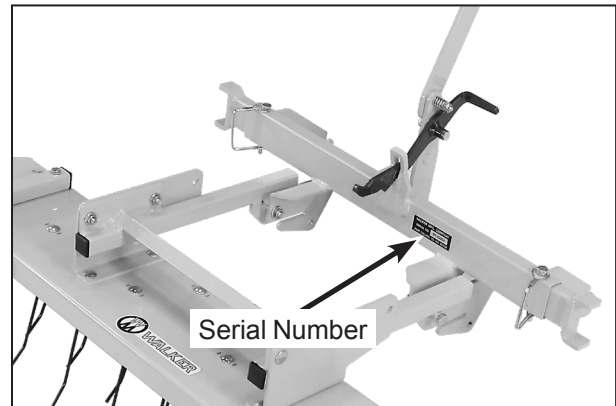
## IDENTIFYING NUMBER LOCATIONS

The dethatcher serial number is affixed to the mounting bracket. Model and serial numbers are helpful when obtaining replacement parts and maintenance assistance. For ready reference, please record these numbers in the space provided.

Dethatcher Serial No. \_\_\_\_\_

Date of Purchase \_\_\_\_\_

Refer to the Operator's manual that accompanies the tractor for the tractor serial number.



**Dethatcher Serial Number Location  
(Front LH View)**

# General Information

## SERVICING OF DETHATCHER

Only routine maintenance and general service instructions are provided in this manual. **Any unauthorized work done** on the dethatcher during the warranty period **may void the warranty**. If you have any difficulty finding an authorized outlet or obtaining warranty service, please contact our Service Department for assistance:

**Walker Manufacturing Company**

5925 E. Harmony Road  
Fort Collins, CO 80528  
1-970-221-5614  
[www.walker.com](http://www.walker.com)

## UNIT DESCRIPTION

The dethatcher can be installed on the front of 36 in., 42 in., 48 in., and 52 in. gear driven decks without any tools. When used with a GHS equipped machine, lawn thatch and debris are removed with one pass.

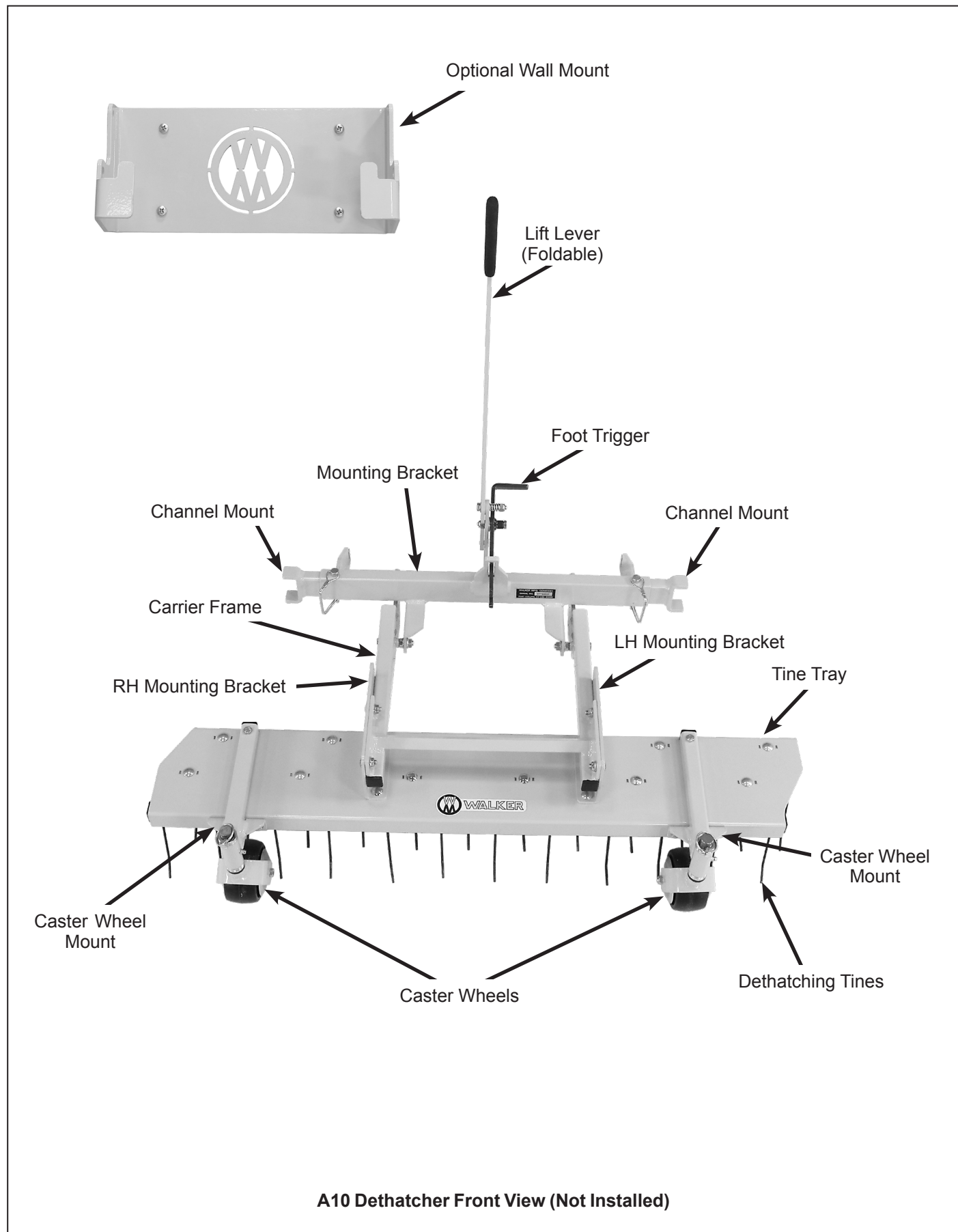
# Specifications

## A10 DETHATCHER

<b>MODEL</b>	<b>A10</b>
Height in. (cm)	35.75 (91)
Width in. (cm)	41 (104)
Length in. (cm)	25 (64)
Overall Length Installed on Tractor in. (cm)*	107.75 (274)
Weight lb (kg)	55 (25)


**NOTE:** The manufacturer reserves the right to make changes in specifications shown herein at any time without notice or obligation.

# Component Identification



# Safety Instructions

Pay particular attention to any information labeled **DANGER, WARNING, CAUTION, IMPORTANT,** and **NOTE** in this manual.

When you see the Safety Alert Symbol (  ), read, understand, and follow the instructions. Failure to comply with safety instructions may result in personal injury.

The seriousness or degree of importance of each type of information is defined as follows:

## **DANGER**

An **IMMEDIATE** hazard that **WILL** result in severe personal injury or **DEATH**, if warning is ignored and proper safety precautions are not taken.

## **WARNING**

A **POTENTIAL** hazard that **COULD** result in severe personal injury or **DEATH**, if warning is ignored and proper safety precautions are not taken.

## **CAUTION**

Possible hazards or unsafe practices that **MAY** result in **MODERATE** personal injury or property damage, or machine damage, if warning is ignored and proper safety precautions are not taken.

**IMPORTANT:** Identifies mechanical information demanding special attention, since it deals with the possibility of damaging a part or parts of the machine.

**NOTE:** Identifies information worthy of special attention.

Walker Manufacturing cannot predict every potentially dangerous situation. Therefore, items labeled as such in this manual do not cover all conceivable situations. Any person using procedures, tools, or control techniques not recommended by Walker Manufacturing must take full responsibility for safety.

The Walker Rider Lawnmower has been designed with many safety features to protect the operator from personal harm or injury. However, it is necessary for the operator to use safe operating procedures at all times. **Failure to follow safety instructions contained in this manual may result in personal injury or damage to equipment or property.**

If you have any questions concerning setup, operation, maintenance, or safety, please contact your authorized Walker Mower dealer or call Walker Manufacturing Company at (970) 221-5614.

## BEFORE OPERATING

1. **Read and understand the contents of this Operator's Manual before starting and operating the machine.** Become thoroughly familiar with all machine controls and how to stop the machine and disengage the controls quickly. Replacement Operator's Manuals are available by sending the Model and Serial Number to:  
**Walker Manufacturing Company**  
5925 East Harmony Road  
Fort Collins, CO 80528
2. **Never allow children to operate rider mower.** Do not allow adults to operate without proper instruction.
3. Do not allow anyone other than the operator on the machine.
4. Keep everyone, especially children and pets, a safe distance away from the area of operation. **Do not mow with bystanders in the area.**
5. Do not operate the machine barefoot or wearing sandals, sneakers, tennis shoes, or similar lightweight footwear. **Wear substantial protective footwear.**
6. Do not wear loose fitting clothing that could get caught in moving parts. Do not operate this machine while wearing shorts; **always wear adequate protective clothing**, including long pants. Wearing safety glasses, safety shoes, and a helmet is advisable and required by some local ordinances and insurance regulations.

# Safety Instructions

7. Prolonged exposure to loud noise can cause impairment or loss of hearing. **Operator hearing protection is recommended.** Wear a suitable hearing protective device, such as earmuffs or earplugs.
8. **Keep all protective shields and safety devices in place.** If a protective shield, safety device, or decal is damaged, unusable, or missing, repair or replace it **before** operating the machine.
9. **Be sure interlock switches are functioning correctly,** so the engine cannot be started unless the Forward Speed Control lever is in the **NEUTRAL-PARK** position, and the PTO clutch is in the **DISENGAGED** position. Also, the engine should stop if the operator lifts off the seat with either the Forward Speed Control (FSC) out of the **NEUTRAL-PARK** position or the PTO clutch in the **ENGAGED** position.
10. **Handle gasoline with care.** Gasoline is highly flammable and its vapors are explosive:
  - a. Use an approved fuel container.
  - b. Never add fuel to a running engine or hot engine (allow hot engine to cool several minutes).
  - c. Keep matches, cigarettes, cigars, pipes, open flames, or sparks away from the fuel tank and fuel container.
  - d. Always fill the fuel tank outdoors using care. Fill to about one inch from the top of the tank. Use a funnel or spout to prevent spilling.
  - e. Replace the machine fuel cap and container cap securely and clean up any spilled fuel before starting the engine.
12. **Never attempt to make any adjustments while the engine is running,** except where specifically instructed to do so.
13. The electrical system battery contains sulfuric acid. Avoid any contact with skin, eyes, and clothing. Keep the battery and acid out of reach of children.

## **WARNING**

This product can expose you to chemicals including Phenylethane which is known to the State of California to cause cancer, and N-Methyl-2-Pyrrolidone, which is known to the State of California to cause birth defects or other reproductive harm. For more information go to [www.P65Warnings.ca.gov](http://www.P65Warnings.ca.gov).

## **OPERATING**

**NOTE:** Refer to your tractor Operator's Manual for safety instructions for operating the tractor.

1. **Operate the machine only in daylight** or in good artificial light with good visibility of areas being cleaned.
2. Sit on the seat when starting the engine and operating the machine. Keep feet on footrests at all times when the tractor is moving and/or the mower blades are operating.
3. For a beginning operator, **learn to steer (maneuver) the tractor with a slow engine speed before attempting any mowing operation.** Be aware that, with the front mounted mower deck configuration, the back of the machine swings to the outside during turns.

## **DANGER**

**Do not operate around overhanging tree branches or bushes at the same height as the operator's torso and head where inadvertent contact may cause injury.**

4. Remember, for an emergency stop, the forward motion of the tractor can always be stopped by pulling the Forward Speed Control (FSC) into the **NEUTRAL-PARK** position.

# Safety Instructions

5. In case either of the transmission drive belts break during operation, and if the machine is on a slope, the machine will freewheel down the slope. **To maintain control**, immediately (1) Release the steering levers and simultaneously (2) Move the FSC to the **NEUTRAL-PARK** position. When the machine is stopped or moving slowly, engage the parking brake.

**NOTE:** The emergency stop procedure is exactly the same procedure used to normally stop and park the machine.

6. Disengage the PTO clutch and put the FSC in the **NEUTRAL-PARK** position before starting the engine (an ignition interlock switch normally prevents starting of the tractor if these controls are in the **OPERATING** position).
7. **Do not operate machine if the operator presence safety switch system is not working.** Verify proper operation by having the operator lift off the seat with the engine running and moving two controls, one at a time; (1) Move the FSC lever out of the **NEUTRAL-PARK** position, and (2) Engage the PTO Clutch. Moving either control should stop the engine immediately.
8. **Do not run the engine in a confined area without adequate ventilation.** Exhaust fumes are hazardous and can be deadly.
9. **Do not carry passengers** - maximum seating capacity is one (1) person.
10. **Avoid sudden starts or stops.** Before backing the machine up, look to the rear to be sure no one is behind the machine. Watch carefully for traffic when crossing or working near roadways.
11. When moving forward, **do not** suddenly put the tractor in reverse by rapidly pulling on the steering levers, especially when going downhill, as this can lift the tractor tail wheel off the ground and set up a bucking motion due to operator overcontrol. If bucking does occur, immediately stop the bucking action by pulling the Forward Speed Control (FSC) lever into the **NEUTRAL-PARK** position.
12. Disengage the PTO clutch when transporting the machine.

13. **The maximum recommended slope operating angle is 15 degrees or 26% grade.** When operating the machine on a slope, reduce speed and use caution to start, stop, and maneuver. To prevent tipping or loss of control of the machine, avoid sharp turns or sudden changes in direction. **Do not operate the machine on a slope greater than 15 degrees.**

14. Never adjust dethatcher gauge wheels with the engine running. Before adjusting height or servicing, disengage the PTO clutch, stop the engine, and remove the ignition key. Wait for all movement to stop before getting off the seat.

**NOTE:** The PTO brake should stop drive line rotation within five (5) seconds of disengaging the PTO clutch. If the brake is not functioning properly, adjust or repair the brake before operating the mower. Contact your Walker dealer for additional help.

15. If the cutting blades strike a solid object or the machine begins to vibrate abnormally, **immediately disengage the PTO clutch, stop the engine, and wait for all moving parts to stop.** Disconnect the fuel solenoid wire [diesel engines] or the spark plug wire(s) [gasoline engines] to prevent accidental starting. Thoroughly inspect the mower and repair any damage before restarting the engine and operating the machine. Make sure cutting blades are in good condition and blade nuts are torqued to 60 lb•ft (81 N•m).
16. **Do not touch the engine or muffler while the engine is running** or immediately after stopping the engine. These areas may be hot enough to cause serious burns.
17. When leaving the machine unattended, **disengage the PTO clutch, stop the engine, and remove the ignition key.**

# Safety Instructions

## MAINTENANCE

**NOTE:** Refer to your tractor Operator's Manual for safety instructions for tractor maintenance.

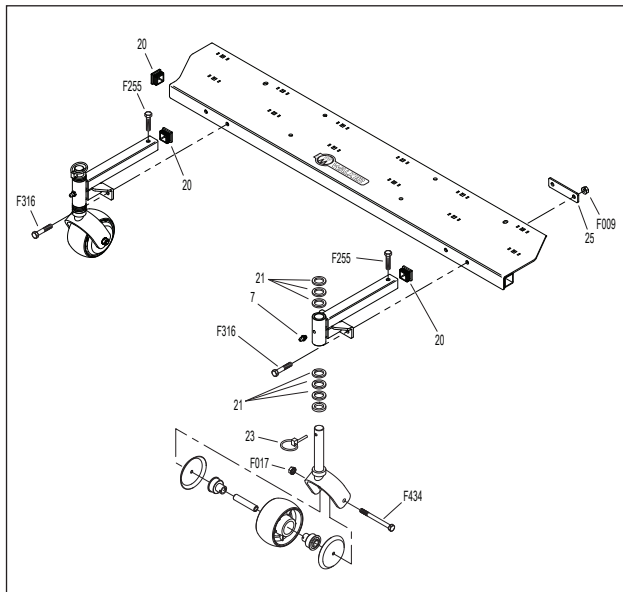
1. **To prevent accidental starting of the engine** when servicing or adjusting the machine, remove the key from the ignition switch and disconnect the fuel solenoid wire [diesel engines] or the spark plug wire(s) [gasoline engines].
2. **To reduce fire hazards**, keep the engine free of grass, leaves, excessive grease, and dirt.
3. Keep all nuts, bolts, and screws tight to ensure the machine is in a safe, working condition. Check the blade mounting nuts frequently, making sure they are tight.
4. **Perform only maintenance instructions described in this manual.** Unauthorized maintenance operations or machine modifications may result in unsafe operating conditions.
5. If the engine must be running to perform a maintenance adjustment, **keep hands, feet and clothing away from moving parts. Do not wear jewelry or loose clothing.**
6. **Always use proper engine service manuals when working on the engine.** Unauthorized maintenance operations or modifications to the engine may result in unsafe operating conditions.
7. Altering the machine or engine in any manner which adversely affects its operation, performance, durability or use **will VOID the warranty** and may cause hazardous conditions.
8. Never attempt to disconnect any safety devices or defeat the purpose of these safety devices.
9. Do not change the engine governor settings or overspeed the engine. The governor has been factory-set for maximum-safe engine operating speed.
10. **Use genuine factory replacement parts.** Substitute parts may result in product malfunction and possible injury to the operator and/or others.

**IMPORTANT:** Keep all applicable manuals immediately accessible to anyone who may operate or service this machine.

# Assembly Instructions

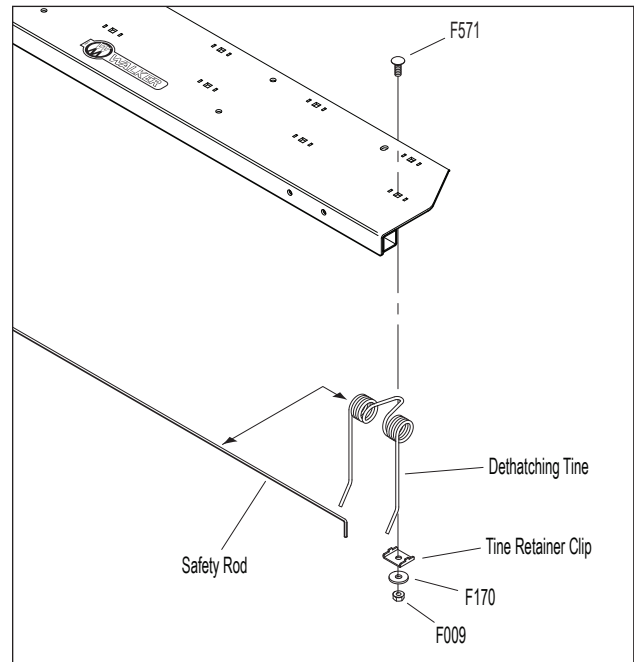
The Walker Lawn Dethatcher will effectively dislodge excessive thatch from your lawn. Thatch is a layer of stems, clippings, runners, roots, and leaves that have not decayed. Excessive thatch prevents air, water, and fertilizer from reaching the roots. These instructions will help ensure proper assembly and operation.

1. Attach the caster wheel mounts to the tine tray as shown in **Install Caster Wheels** illustration. Install the caster fork/wheel assembly into the caster wheel mount as shown. Be sure to install the shock washer and three (3) spacers before installing the caster fork. Install the remaining three (3) spacers at the top of the caster fork and install the lynch pin. Use this as a starting point for the spacer location.



**Install Caster Wheels**  
(Carrier Frame and Tray Mounting Brackets  
Removed for Clarity)

2. Attach the tines to the tine tray finger tight, as shown in the **Install Dethatching Tines** illustration. It is important to be sure the loop between the tine coils nests around the hardware on the tine tray. After all the tines are installed, tighten the tine mounting hardware.
3. Insert safety rods through the coils of the tines as shown in the **Install Dethatching Tines** illustration. Secure by bending the end of the rod 1-1/2 in. to 2 in. from the end to prevent them from slipping back through the tines. The safety rod must be free to move slightly from side to side.

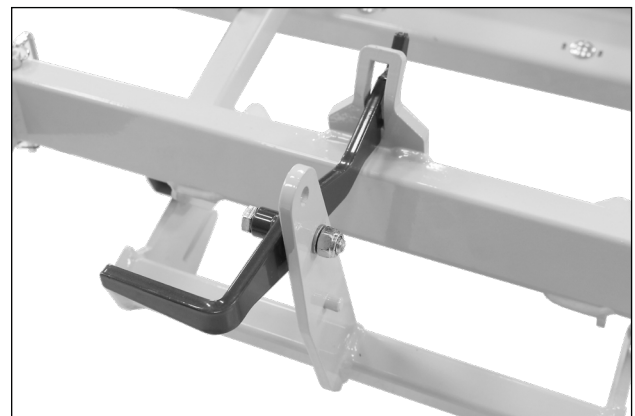


**Install Dethatching Tines**  
(Caster Wheel Assembly Removed for Clarity)

## **WARNING**

Failure to install the safety rods can result in personal injury if a tine should disengage from the tine tray.

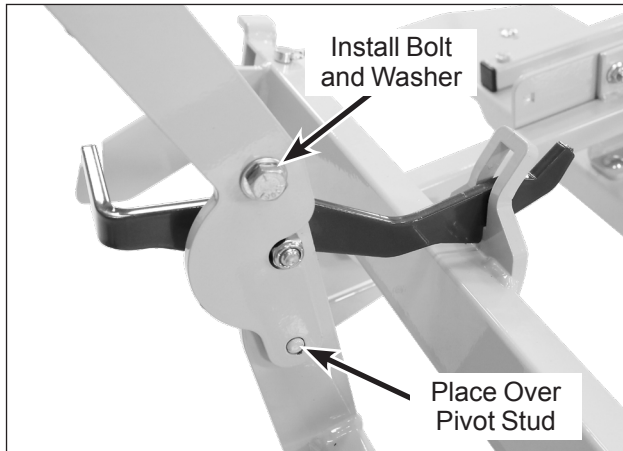
4. Install the foot trigger as shown in **Foot Trigger** photo using the 5/16-18 x 1-3/4 Hex Bolt (F316), 5/16 x 1 x 7/64 Flat Washer (F170), Washer (F060) and 5/16-18 ESNA Nut (F020). Foot trigger should move freely after tightening nut.



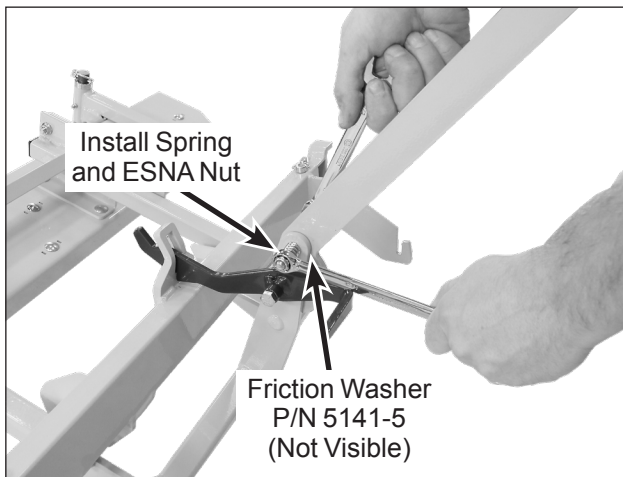
**Foot Trigger**

# Assembly Instructions

5. Attach the lift lever to the carrier frame and tighten hardware as shown in **Install Lift Lever** photo and **Install Lift Lever Compression Spring** photo so that 2 - 3 threads protrude through the ESNA nut.



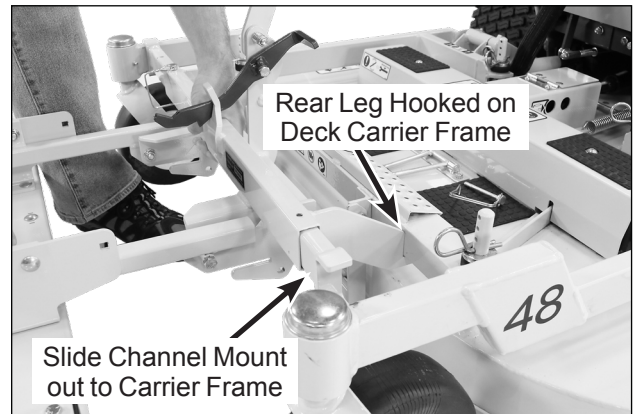
**Install Lift Lever**



**Install Lift Lever Compression Spring**

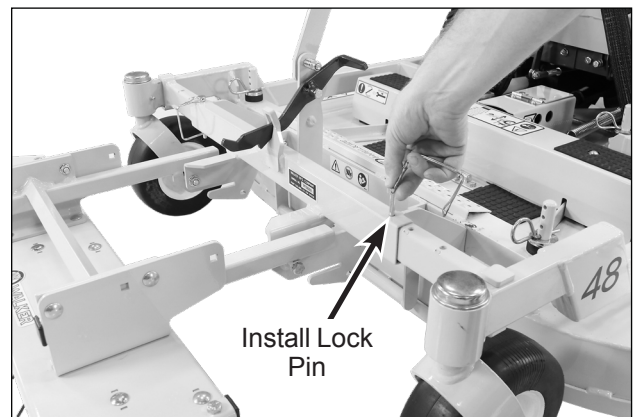
## ATTACH DETHATCHER TO DECK

1. Select a smooth, flat surface such as a driveway, sidewalk, garage floor, etc. It is a simple procedure for attachment, with no tools required.
2. Hook the rear legs of the dethatcher under the front of the deck carrier frame as shown in **Attach Dethatcher to Deck Carrier Frame**, and slide the channel mounts out to the deck carrier frame arms.



## Attach Dethatcher to Deck Carrier Frame

3. Once the channel mounts are attached to the carrier frame arms, install the lock pins as shown in **Install Lock Pins to Channel Mounts** photo. The dethatcher should be centered between the carrier frame of the deck.



## Install Lock Pins to Channel Mounts

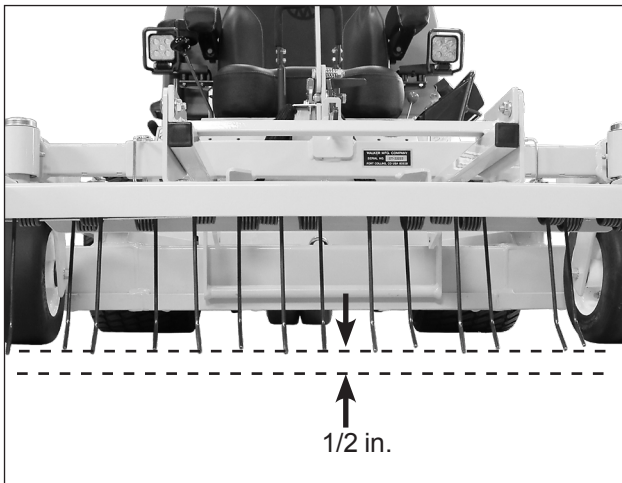
4. To remove the dethatcher, reverse the installation process.

# Assembly Instructions

## ADJUST TINES

Check and adjust the dethatcher tine working height on a flat surface. With the dethatcher mounted on the mower deck and the tines lowered into the working position, the tine ends should be approximately 1/2 in. (13mm) above the surface as shown in the **Adjust Tine Working Height** photo. The tines should touch the surface when pushed back. If the tine vertical position needs to be adjusted, use the spacer washers on the caster wheel forks as follows (each spacer washer gives 1/8 in. [3mm] of adjustment):

1. To raise the tines, remove the linch pin and move spacers from the top of the caster fork and place them on the bottom.
2. To lower the tines, remove spacers from the bottom of the caster fork and place them on the top of the caster fork.



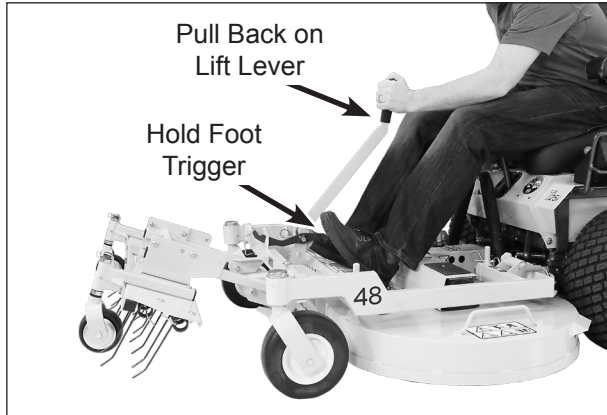
**Adjust Tine Working Height**

# Operating Instructions

## OPERATING THE DETHATCHER

The dethatcher can be raised or lowered to engage, or disengage, the tines as desired.

1. To engage the dethatcher, pull back on the lift lever. While holding the foot trigger, lower the dethatcher into the working position as shown in **Engaging Dethatcher** photo.



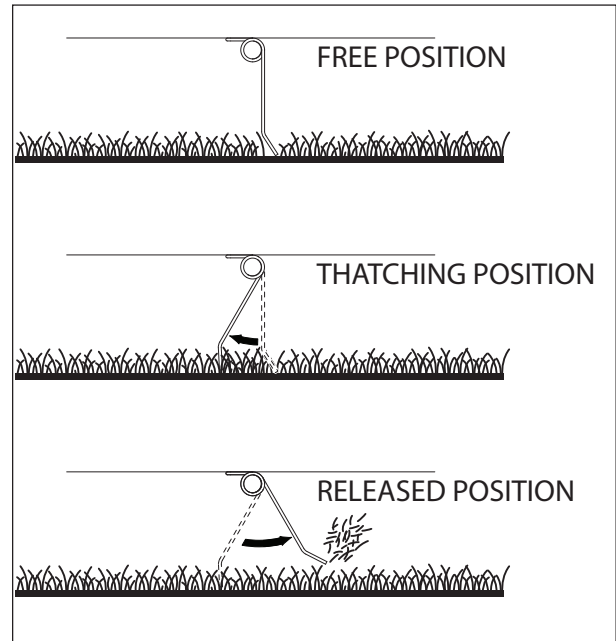
**Engaging Dethatcher**

2. To disengage the dethatcher, pull back on the lift lever until the trigger assembly engages the mounting bracket.

**NOTE:** When raising/disengaging the dethatcher, there is resistance due to the tines being engaged. It is easier to disengage the tines by stopping the tractor forward motion and reversing the tractor while lifting.

## TINE ACTION

Grass should be less than 3 in. (8cm) tall for proper tine action. When in use, all of the tines should deflect back independently and “flip” the thatch forward as shown in the **Tine Action** illustration. If the tines drag without flipping forward, the tines are too low and need to be raised. If the tines remain in the free position, the tines are too high and needs to be lowered. Refer to **Adjust Tines** in the **Assembly Instructions** and adjust as needed for proper dethatching action.

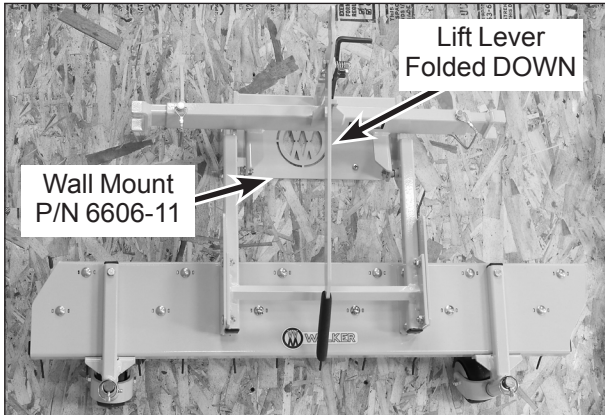


**Tine Action**

## Storage Instructions

### WALL BRACKET (OPTIONAL)

Use the P/N 6606-11 Wall Mount and foldable Lift Lever to store dethatcher in trailer or storage area when not in use.



### END OF SEASON

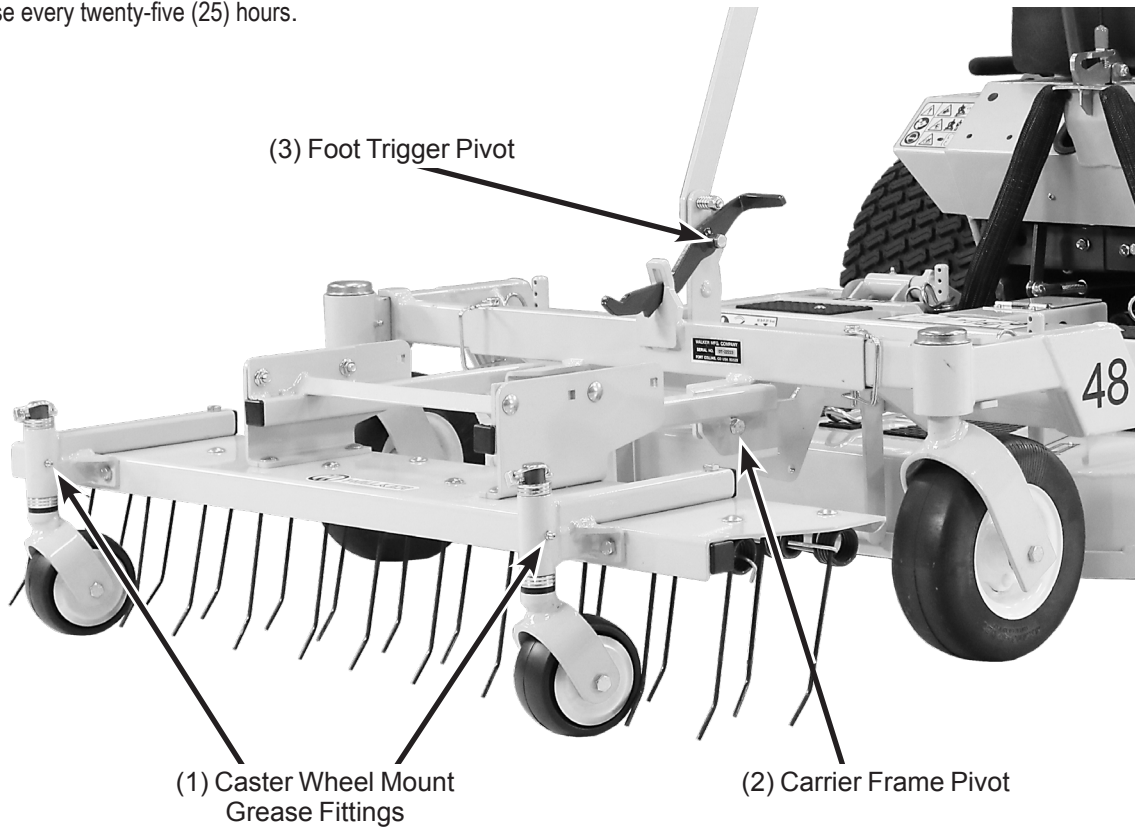
1. Clean and inspect the dethatcher thoroughly, noting any replacement parts that will be needed before the next season.
2. Repaint all parts from which paint has worn.  
**NOTE:** Rustproofing or painting every year will prolong the life of the dethatcher.
3. When the dethatcher is dry, apply oil to tines to prevent rust. Apply lubricant liberally to all exposed surfaces to protect against rust.
4. Store dethatcher in a dry place.

## Maintenance Instructions

The Walker Lawn Dethatcher is nearly maintenance free. However, periodically grease will need to be added to the grease fittings on the caster wheel mounts and the pivot points shown in **A10 Lubrication Points Diagram** will need to be oiled. Also inspect for broken/worn tines and replace as needed.

Ident No.	Location	Lubrication Type	No. Places
1	Caster Wheel Mounts	Grease*	2
2	Carrier Frame Pivot	Oil	2
3	Foot Trigger Pivot	Oil	1

\* Grease every twenty-five (25) hours.



**A10 Lubrication Points Diagram**

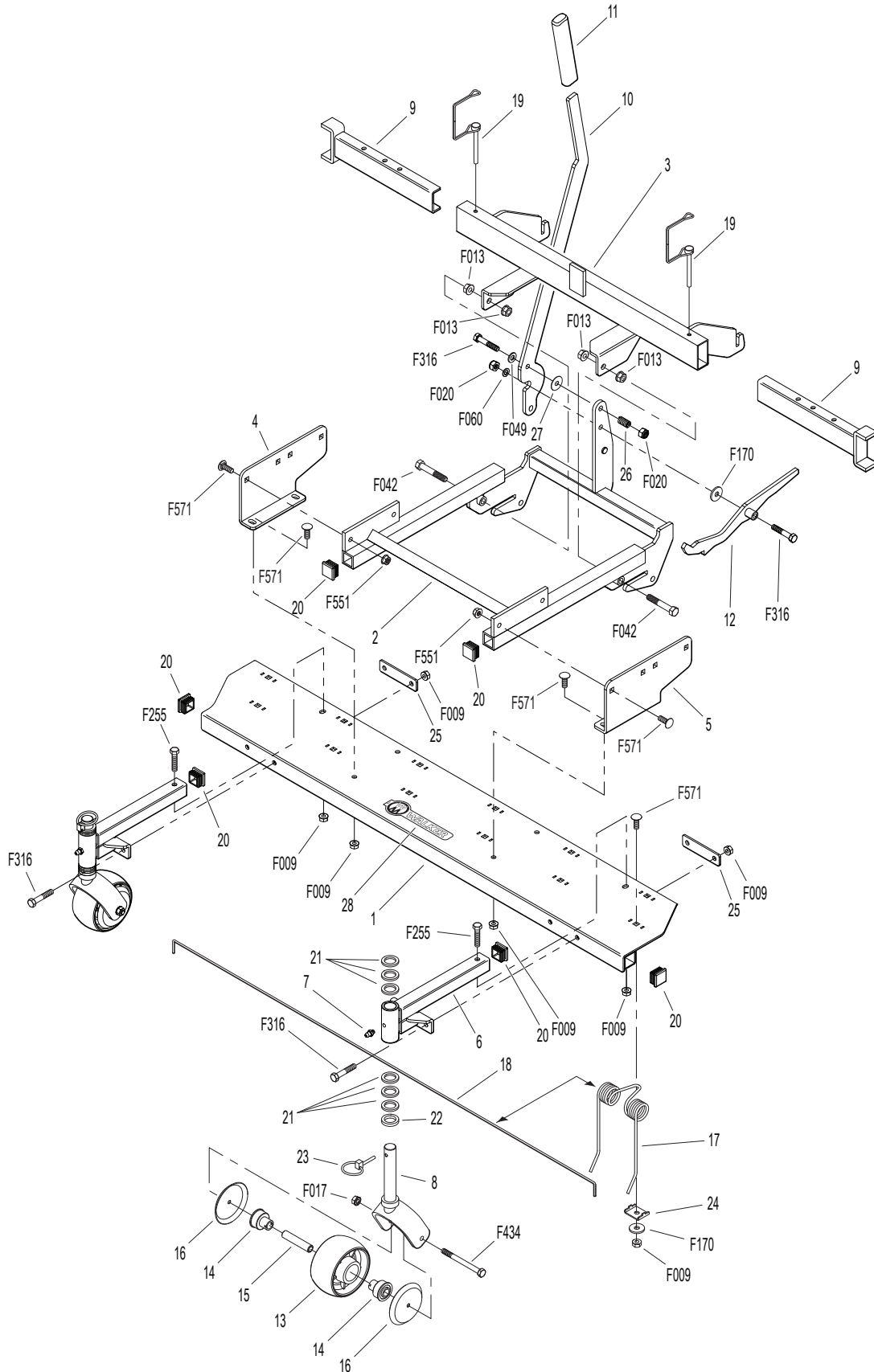
## DT40A DETHATCHER ASSEMBLY (A10)

ITEM NO.	PART NO.	DESCRIPTION	NO. REQ'D	ITEM NO.	PART NO.	DESCRIPTION	NO. REQ'D
<b>DT40A Dethatcher (40")</b>				<b>Fasteners</b>			
1	6605-9	Tine Tray	1	F009	5/16-18 Whiz Locknut		22
2	6607-8	Carrier Frame	1	F013	3/8-16 Whiz Locknut		4
3	6609-9	Mounting Bracket	1	F017	5/16-18 Keps Nut		2
4	6615-8	Tray Mounting Bracket, RH	1	F020	5/16-18 ESNA Nut		2
5	6615-9	Tray Mounting Bracket, LH	1	F042	3/8-16 x 2-1/4 Hex Bolt		2
6	6605-8	Caster Wheel Mount	2	F049	5/16 SAE Washer		1
7	5830	Grease Fitting	2	F060	AN960516 Washer		1
8	6770	Caster Wheel Fork	2	F170	5/16 x 1 x 7/64 Flat Washer		13
9	6604-6	Channel Mount	2	F255	5/16-18 x 1-1/2 Hex Bolt		2
10	6606-1	Lift Lever (Includes Item # 11)	1	F316	5/16-18 x 1-3/4 Hex Bolt		6
11	5850-2	Handle Grip, Foam (5-1/2)	1	F434	5/16-18 x 3-1/2 Hex Bolt		2
12	6603-3	Trigger Assembly	1	F551	5/16-18 Flange Top Lock Nut		4
13	6715-2	Roller Wheel	2	F571	5/16-18 x 7/8 Carriage Bolt		20
14	6715-3	Roller Wheel Bearing	4				
15	6715-4	Axle Spacer Tube	2				
16	6605-6	Tine Deflector	4				
17	6610	Dethatching Tine	12				
18	6608-2	Safety Rod (42")	2				
19	7775-6	Wire Lock Pin (2-1/2")	2				
20	8662-5	Square Plug (1 x 1)	6				
21	6770-2	Spacer (1-1/8 x .765 x .125)	12				
22	6770-3	Shock Washer	2				
23	2775-1	Lynch Pin (3/16 x 1-1/4)	2				
24	6610-3	Tine Retainer Clip	12				
25	6605-11	Backing Plate	2				
26	6605-12	Compression Spring (.530 x .875)	1				
27	5141-5	Friction Washer (1 x 5/16 x .031)	1				
28	5809-2	Decal, Walker Logo	1				

Beginning S/N 2018-22223

Use only genuine **Walker**® replacement parts.

# DT40A DETHATCHER ASSEMBLY (A10)



Beginning S/N 2018-22223  
Use only genuine **Walker**® replacement parts.







# LIMITED WARRANTY FOR WALKER DETHATCHER (A10)

## 1. What this warranty covers, and for how long:

Walker Manufacturing company will, at its option, repair or replace, without charge, any part covered by this warranty which is found to be defective in material and/or workmanship within one (1) year after date of sale to the original retail purchaser unless the product is used for rental purposes, in which case this warranty is limited to ninety (90) days. At Walker's request, customer will make the defective part available for inspection by Walker and/or return the defective part to Walker, transportation charges prepaid. All parts and components of the Walker A10 Dethatcher are covered by this warranty.

## 2. What this warranty does not cover:

A. This warranty does not cover defects caused by depreciation or damage caused by normal wear, accidents, improper maintenance, improper use or abuse of the product, alterations, or failure to follow the instructions contained in the Operator's Manual for operation and maintenance.

B. The customer shall pay any charges for making service calls and/or for transporting the attachment to and from the place where the inspection and/or warranty work is performed.

## 3. How to obtain service under this warranty:

Warranty service can be arranged by contacting the dealer where you purchased the attachment or by contacting Walker Manufacturing Company, 5925 East Harmony Road, Ft. Collins, CO 80528. Proof of the date of purchase may be required to verify warranty coverage.

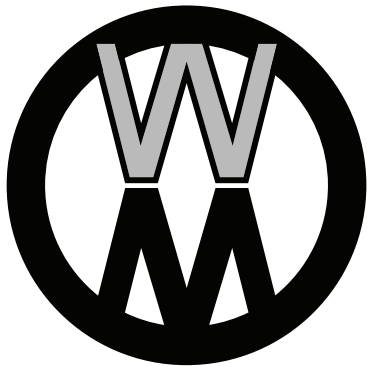
## 4. Warranty limitation:

**A. THERE IS NO OTHER EXPRESS WARRANTY. ANY WARRANTY THAT MAY BE IMPLIED FROM THIS PURCHASE INCLUDING MERCHANTABILITY AND FITNESS FOR A PARTICULAR PURPOSE IS HEREBY LIMITED TO THE DURATION OF THIS WARRANTY AND TO THE EXTENT PERMITTED BY LAW ANY AND ALL IMPLIED WARRANTIES ARE EXCLUDED.** Some states do not allow limitations on how long an implied warranty lasts, so the above limitations may not apply to you.

**B. WALKER WILL NOT BE LIABLE FOR ANY INCIDENTAL, CONSEQUENTIAL, OR SPECIAL DAMAGES AND/OR EXPENSES IN CONNECTION WITH THE PURCHASE OR USE OF THE MACHINE.** Some states do not allow the exclusion or limitation of incidental or consequential damages, so the above limitation(s) or exclusion(s) may not apply to you.

C. Only the warranty expressed in this limited warranty shall apply and no dealer, distributor, or individual is authorized to amend, modify, or extend this warranty in any way. Accordingly, additional statements such as dealer advertising or presentations, whether oral or written, do not constitute warranties by Walker, and should not be relied upon.

D. This warranty gives you specific legal rights, and you may also have other rights which vary from state to state.



**WALKER**

**WALKER MFG. CO. • 5925 E. HARMONY ROAD, FORT COLLINS, CO 80528 • (970) 221-5614**  
**FORM NO. 012618      PRINTED IN USA      [www.walker.com](http://www.walker.com)      ©2017 WALKER MFG. CO**