

# WALKER MOWERS

## POWER DUMP KIT (10.0 BUSHEL CATCHER) P/N 8620-2

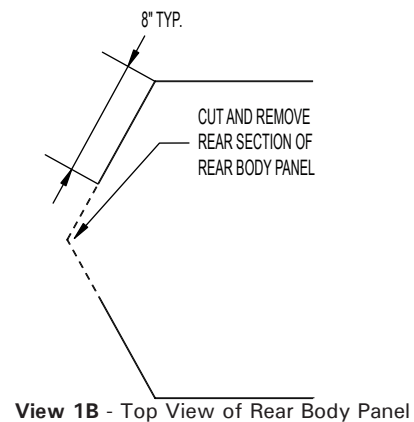
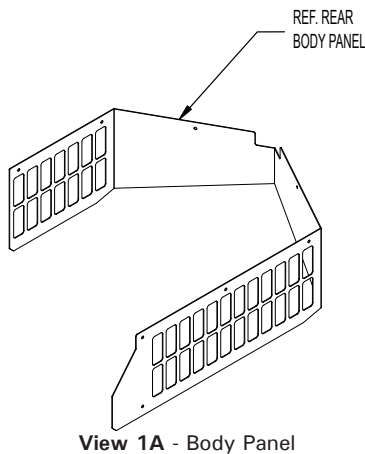
DESCRIPTION: This kit is offered to install the Power Dump in the field on Models MD/MT that have a 10.0 bushel catcher. The power dump affords the operator the convenience of emptying the catcher box without leaving the operator's seat by using a switch mounted to the front right of the seat.

NOTE: Some tractors may already have predrilled holes.

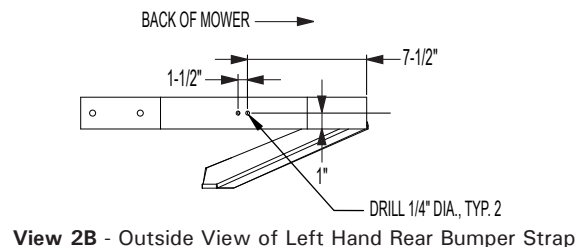
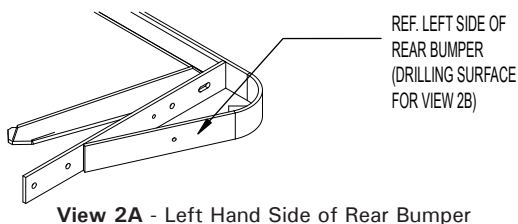
NOTE: If installing this kit on an MTL31, P/N's 7017-11 and 7017-12 Upper Radiator Hoses and P/N 8123-2 Insultherm will need to be purchased and installed. See Illustration "A".

### INSTRUCTIONS:

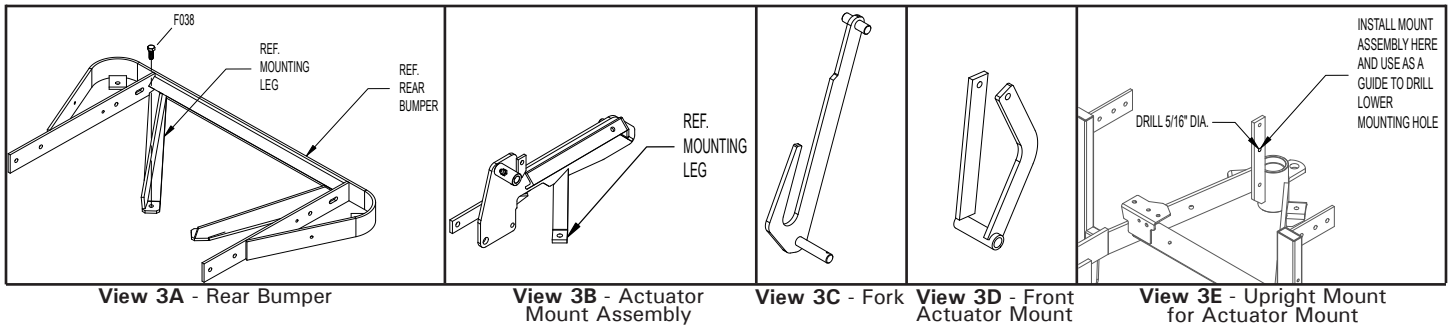
1. Remove rear body panel (see View 1A) from catcher support frame. Cut out rear portion of body panel (see View 1B). Note: On some tractors the body panel may already be cut as shown in View 1B



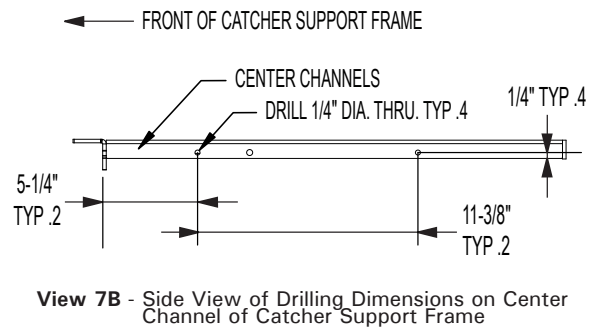
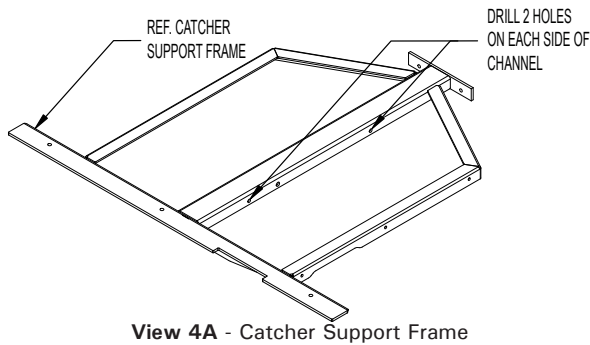
2. On Models MDD and MDG (prior to S/N 97-29676), drill two (2) 1/4" holes in the left rear bumper strap (View 2A). See (View 2B) for reference measurements when drilling holes. Remove coolant tank and mount in position shown in parts breakdown.



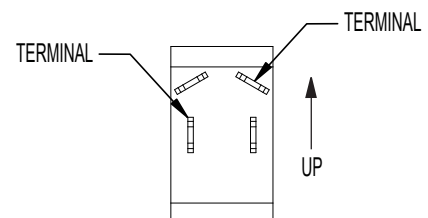
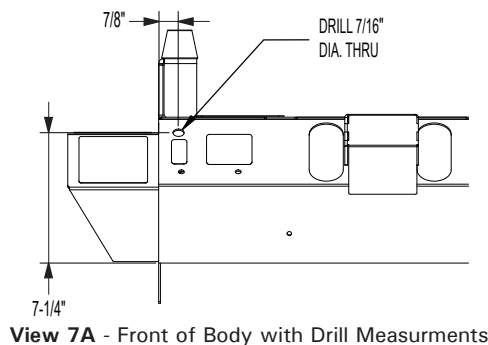
3. Remove the two (2) bolts that secure angle braces for rear bumper (see View 3A). Position the actuator mount assembly (View 3B), fork (View 3C), and front actuator mount (View 3D), as shown in parts breakdown. Attach actuator mount assembly to the upright mount on the tail wheel bearing housing (View 3E) using only the top bolt shown in parts breakdown. Using new bolts, attach mounting legs on rear bumper (that were removed in first part of this instruction) including the mounting legs for the actuator mount assembly, as shown in parts breakdown. Using the lower hole as a guide, drill a 5/16" hole through the upright bar and install the lower bolt as shown in parts breakdown.



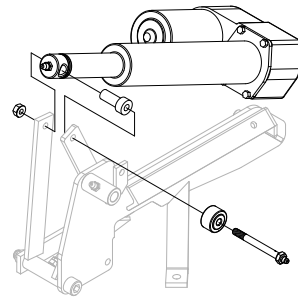
- Drill four (4) 1/4" holes (2 on each side of channel) in the center channel of the catcher support frame (View 4A). See View 4B for reference measurements for drilling holes. Remove gas spring supporting catcher box on chassis frame and set aside. NOTE: It will be necessary to support the catcher box in the open position until gas spring is reinstalled. Attach **only** the front of the RH channel angle and LH channel angle using hardware supplied.



- Install washers and roller wheels on top of fork, as shown in parts breakdown. Rotate top of fork to the rear of mower and place roller wheels into the RH and LH channel angles coming in from the bottom. Install remaining bolts at the bottom of the channel angles. Reattach gas spring that was removed earlier to tab on LH channel angle, as shown in parts breakdown.
- Install rear mount of linear actuator onto pin of actuator mount assembly (View 3B) and secure with F134 washer and F068 cotter pin, as shown in parts breakdown.
- Drill a 7/16" hole in the front of body, as shown in View 7A. Mount lift control switch in front body hole. Mount switch as shown in View 7B. Install wire harness from linear actuator to lift control switch along main wire harness using wire ties provided with kit. Attach black wire to chassis ground and red wire to fused side of circuit breaker. Connect harness to control switch and actuator motor. Check operation of actuator, pushing down on switch should extend ram of actuator. Attach decal to front body next to switch.

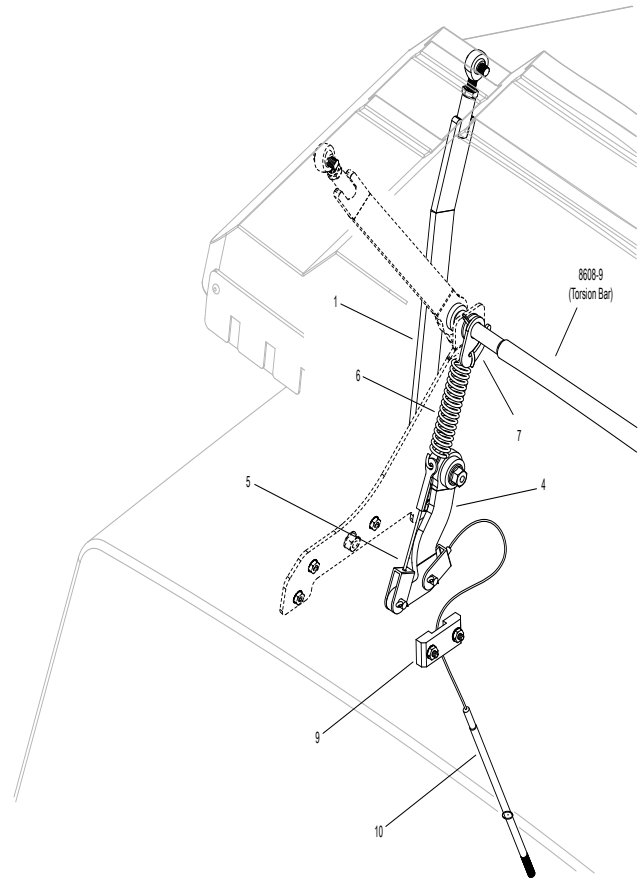


- Extend ram of actuator to maximum length. Insert pivot tube (View 8A) and spacer (View 8A) into end of ram and position ram in front actuator mount (View 8A). Install bolt and roller bearing (View 8A). Lower catcher box and check operation of lifting action.

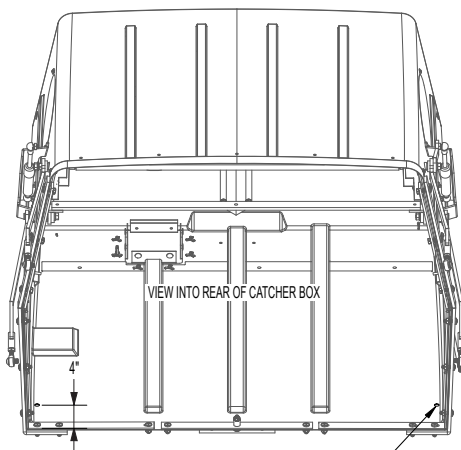


**View 8A**  
Installing  
Pivot Tube  
and Spacer  
on Actuator,  
and Bolt and  
Roller Bearing  
on Actuator  
mount

- Remove the cotter pins on both ends of the torsion bar (inside catcher box). Insert spring hook ends on both ends of torsion bar and reinstall bar with new cotter pins.
- Remove existing lower arms (outside of catcher box) and install new arms on both sides.
- Install new actuator arms on both sides and orient each one as shown in parts breakdown.
- Assemble door springs to spring hooks (attached to torsion bar) and attach extension spring clevis end to door actuator, as shown.
- Attach cable assembly to door actuator arms with clevis pin, as shown in View 9. Drill two 3/8" holes in the grass catcher bottom, as shown in (View 15) and install threaded end of cable assembly through each hole. Attach ball joints to cable ends. Attach ball joints to bumper strap.

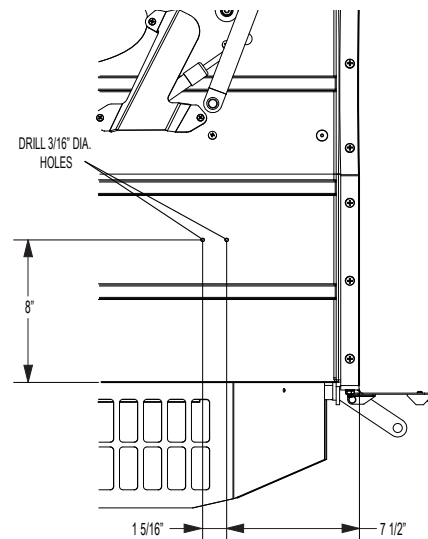


**View 9 - Mounting Sequence for Door Actuator Arms**



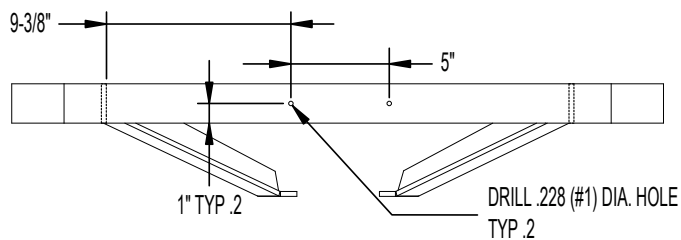
FOR INSTALLING THE DOOR ACTUATOR CABLES, DRILL TWO (2) 3/8" HOLES APPROXIMATELY 1/4" INSIDE THE RADIUS OF THE CATCHER BOX AND 4" FROM THE BACK EDGE, AS SHOWN.

**View 15 - Drilling Reference for holes for dump cables**

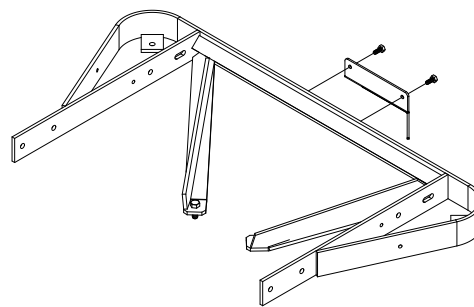


**View 16 - Drill holes in sided of catcher box to install cable guides**

14. Tilt the catcher to the full back position using the dump switch. Check the tension of both cables. The tension should be equal. Adjust accordingly with the ball joints. Tighten the jam nuts.
15. Drill holes in both sides of the catcher box (as shown in View 16) to install cable guides inside catcher. Install guides on both sides, as shown in parts breakdown.
16. Plug the catcher harness into the main harness. With the ignition switch in the run position and the PTO engaged, check the operation of the Powerfil.
17. Drill two (2) holes on the rear bumper (View 17A) using a #1 drill bit (.228) and mount motor guard (View 17B).

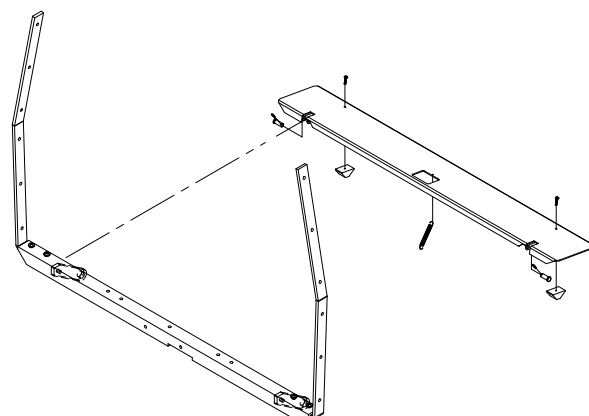


View 17A - Drilling Holes to Mount Motor Guard



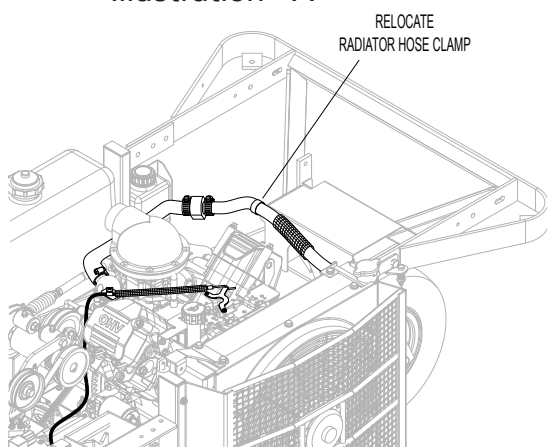
View 17B - Mounting Motor Guard

18. Attach catcher dump plate to catcher pivot mount arms using clevis pin (View 18). Attach dump plate slides to dump plate assembly (View 18). Attach spring to dump plate assembly, as shown.



View 18 - Catcher Dump Plate

Illustration "A"



A

ITEM NO.	PART NO.	DESCRIPTION	QTY REQ'D
1	8607-10	Lower Arm/Power Dump	2
2	7620-3	Pivot Bushing (1/2 x 9/16)	4

3	7523-2	Clevis Pin W/Hole (1/4 x 5/8)	4
4	8623-6	Inner Power Dump Arm, RH	1
5	8623-3	Extension Spring Cable	2
6	5221-2	Ext Spring (3/4 x 3-1/2")	2
7	8623-5	Torsion Spring Hook	2
8	8623-7	Inner Power Dump Arm, LH	1
9	7620-6	Cable Guide	2
10	7620-9	Roller Wheel	2
11	7628-1	Channel Angle/RH	1
12	7629	Channel Angle/LH	1
13	7622	Wire Harness/Power Dump	1
14	8623-2	Power Dump Cable/10.0	2
15	5552	Ball Joint (1/4-28)	2
16	7630-3	Ram Pivot & Spacer	1
17	7721	Linear Actuator (13.898)	1
18	6623	Toggle Switch	1
19	7624	Sealed Needle Bearing	1
20	6623-1	Switch Boot	1
21	7610-5	Extension Spring (1/4 x 2-7/8)	1
22	7625	Fork	1
23	7627	Front Actuator Mount	1
24	7636-1	Actuator Mount	1
25	5830	Grease Fitting	1
26	7624-1	Roller Bearing Bolt	1
27	7633	Decal, Power Dump	1
28	8620-5	Guard, Power Dump Motor	1
29	5975-7	Cable Tie (50# x 11")	1
30	5975-3	Cable Tie (50# x 7")	5
31	5975-1	Cable Tie (18# x 3-3/4")	1
32	5842-1	Washer (1.0 ID x 1.350 OD)	1*
F002	F002	10-24 Keps Nut	4
F003	F003	1/4-28 Hex Nut	2
F004	F004	1/4-20 Keps Nut	4
F009	F009	5/16-18 Whiz Locknut	5
F012	F012	3/8-16 Keps Nut	4
F028	F028	10-24 x 3/4 PPHMS	4
F029	F029	1/4-20 x 1/2 Hex Bolt	4
F039	F039	3/8-16 x 1-1/4 Hex Bolt	2
F049	F049	5/16 SAE Washer	2
F068	F068	1/8 x 1 Cotter Pin	4
F069	F069	3/32 x 1/2 Cotter Pin	4
F085	F085	3/16 Rivet Backup Washer	4
F093	F093	5/16-18 x 1 Hex Bolt	2
F134	F134	AN960816L Washer	4
F226	F226	5/16-18 x 7/8 Hex Bolt	2
F266	F266	1/2 x 2-3/4 Shoulder Bolt	1
F287	F287	1/4-28 Keps Nut	2
F337	F337	1/4-20 x 5/8 Self-Tap Bolt	2

\* Used only on Model MD.

